

# ZONDA 3 FX

Ready to create



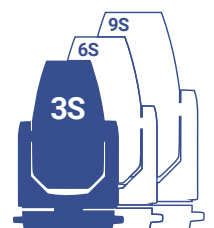
**AYRTON**

Digital Lighting

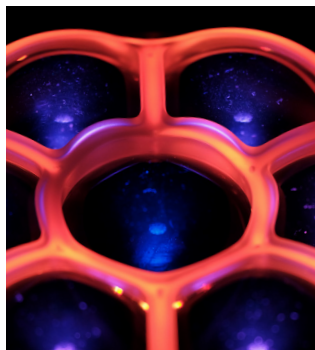
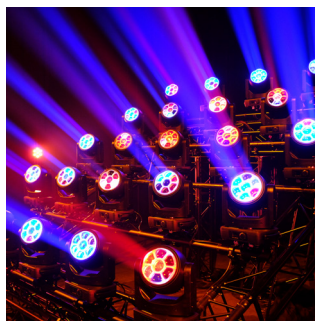


## ZONDA 3 FX ... ready to create

Some luminaires have the power to transform the ordinary into the extraordinary. AYRTON's latest creation is a luminaire with so many advantages... fast, compact and ultra-creative with the spectacular Liquid Effect™.



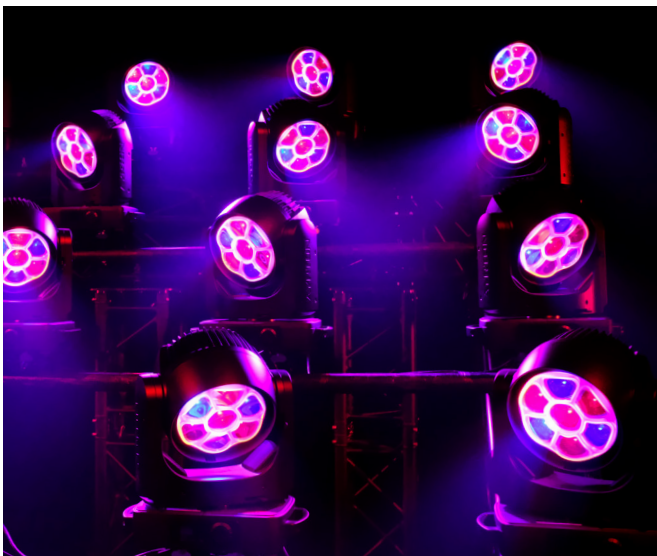
**A**kin to the ZONDA 9, the latest addition to the ZONDA family designed for stage lighting is an incredibly compact luminaire with unlimited creative potential. ZONDA 3 FX is a versatile fixture with amazing effects that can switch from beam to wash with great ease. Its speed of movement and reduced dimensions increase its dynamic potential. Because of its size, it is easy to use in compositions with curtains or matrices. Fitted with seven high-performance 40-Watt LED sources with RGB+W, ZONDA 3 FX offers a proprietary optical system made up of a unique 170 mm mono-block cluster in PMMA, which enhances beam coherence, and seven glass light guides with an output surface that has an optical micro-structure.



### Push the limits of creativity with ZONDA 3 FX

A 50 mm truncated transmitting lens whose optical surface is equivalent to that of a 70 mm round lens, enables ZONDA 3 FX to obtain a highly intensive beam with a zoom ratio of 14:1 and a wide zoom range of 4° to 56°.

This LED/optical system combination is capable of producing light output of 5,200 lumens and a perfectly homogeneous mixture of pastel and saturated colours regardless of the colour combination chosen.



**170 mm**  
mono-block cluster



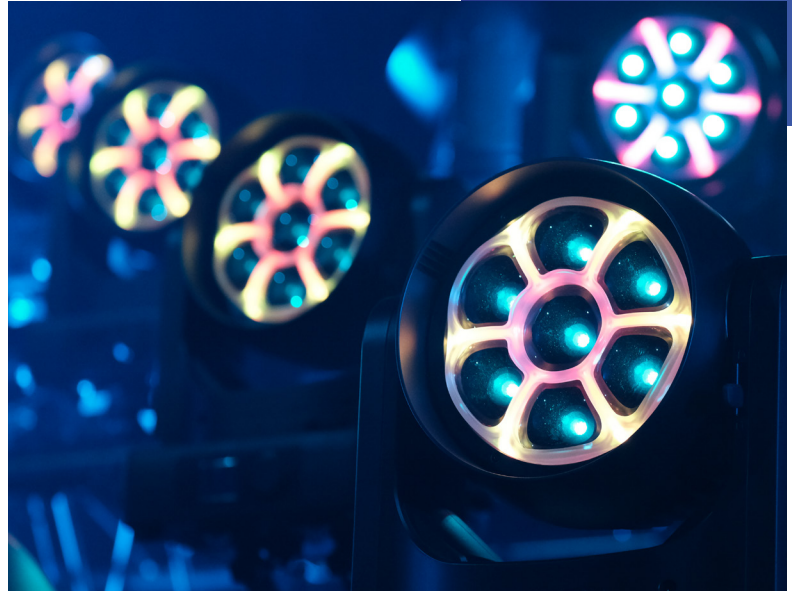
**5,200 lumens**

## Explore new graphic dimensions with ZONDA 3 FX

ZONDA 3 FX is a creative, versatile and feature-rich luminaire that borrows from the main attributes of the WASH version.

It offers continuous rotation of the pan and tilt movement I.R.S.<sup>™</sup>. Your future compositions will be more dynamic.

Individual control of each LED allows you to achieve 3D volumetric effects. Perfect separation between the light sources helps to significantly boost the level of contrast and visual perception of multiple beams.



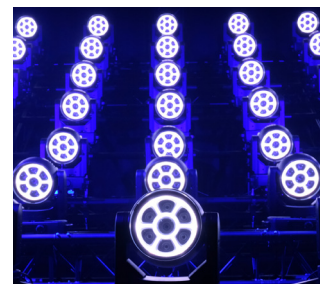
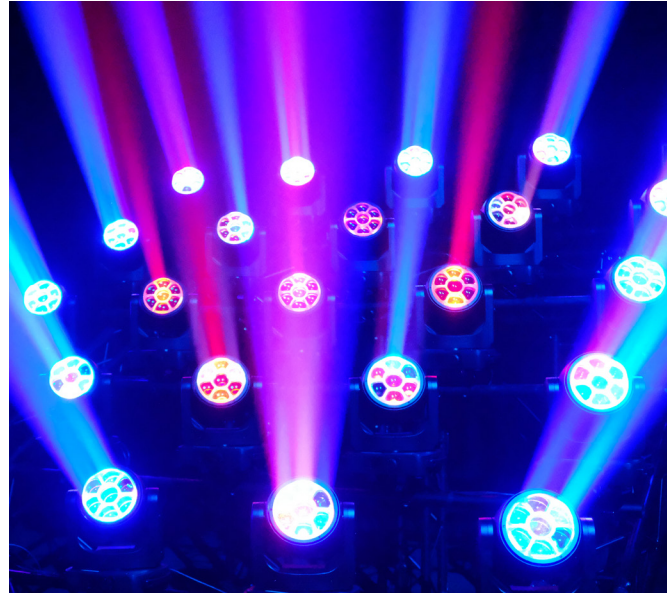
3 Series - Source  
**7 RGBW LED**

Zoom aperture  
**4° to 56°**

Frontal Lens  
**7 x 50 mm**

Weight  
**11.1 Kg**

**7 lenses**  
in PMMA





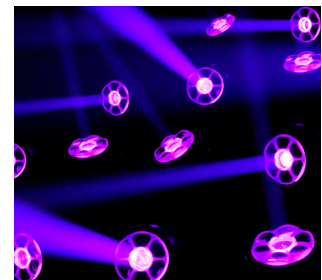
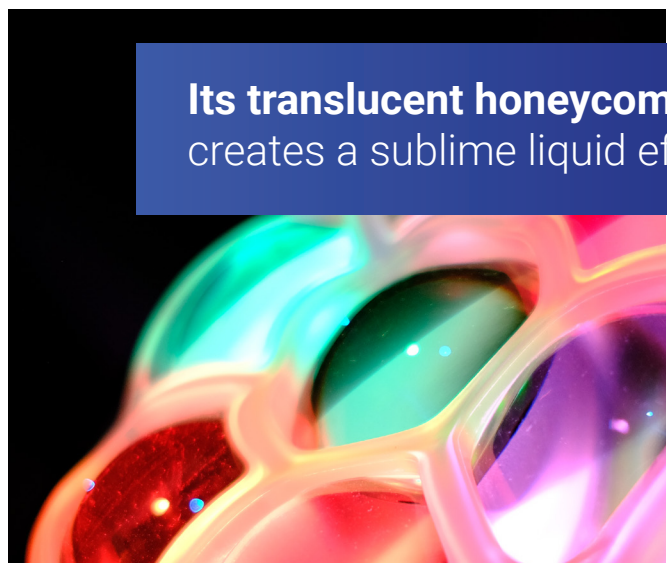
## A library of breathtaking graphic effects

This exceptional luminaire is equipped with a high-definition Liquid Effect™ located between its main lenses, which can generate complex graphic effects. It can be used alone or in combination with the main LED matrix.

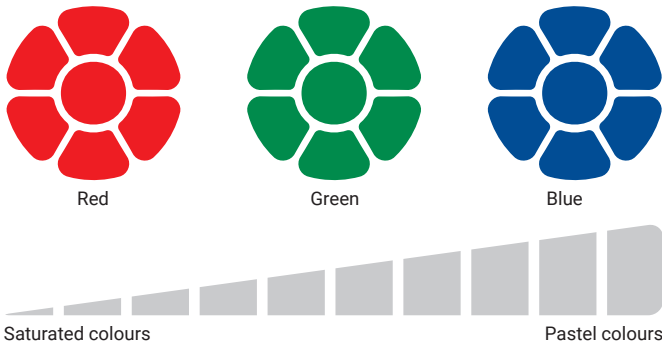
The library of effects in ZONDA 3 FX provides a limitless source of inspiration.

A new optimised cooling system, simplified lens guidance systems, and an ever smarter design of the internal structure have made it possible to reduce the size and weight of the luminaire considerably Slim-21™.

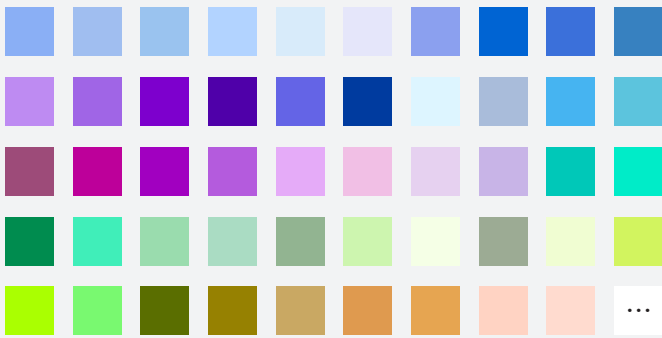
All these innovations are the exclusive patents of AYRTON. ZONDA 3 FX opens the doors of creativity.



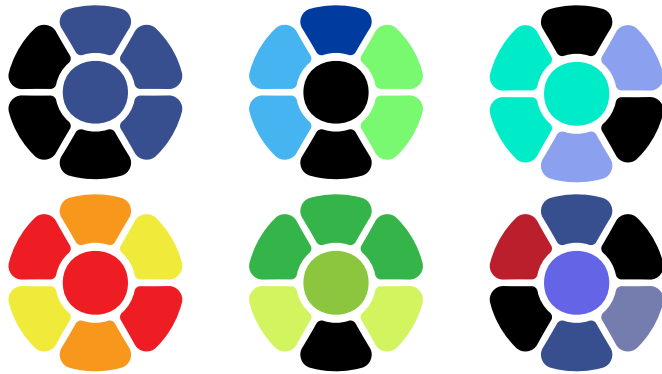
### Colours



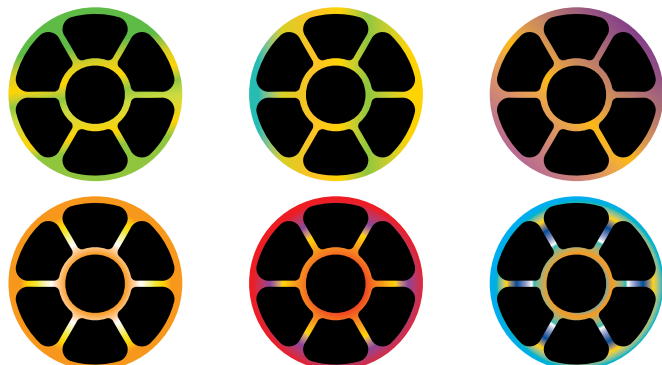
### 192 Pre-programmed colours



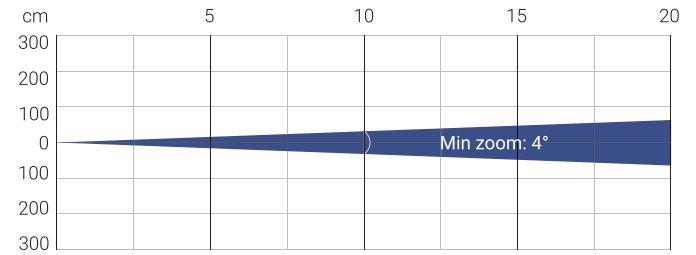
### Pixel control



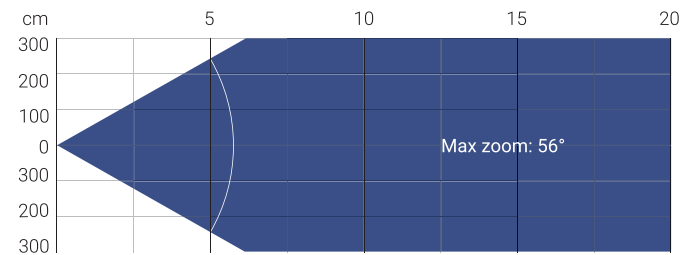
### Liquid effect



### Photometry



Distance (m)	5		10		15		20	
Unit	lux	∅	lux	∅	lux	∅	lux	∅
Red	3647		912		405		228	
Green	6444		1611		716		403	
Blue	1929	0.35	482	0.7	214	1.05	121	1.4
White	9542		2386		1060		596	
RGB+W	18600		4650		2067		1163	



Distance (m)	5		10		15		20	
Unit	lux	∅	lux	∅	lux	∅	lux	∅
Red	79		20		9		5	
Green	139		35		15		9	
Blue	43	5.54	11	11.09	5	16.63	3	22.17
White	196		49		22		12	
RGB+W	388		97		43		24	

Total Flux	5,200 lm Zoom at 100% (Sphere, Fan mode Stage)
CCT White chip	7600 (±500K)
Ra White chip	70 (±2)
TLCI White chip	45
TM-30 White chip	Rf: 68.2 Rg: 96.6

Fan Mode	Noise Level (dBA)	Flux (lm, sphere)
Auto Mode	42.9	5,100
Stage Mode	45.8	5,200
Silence Mode	38.5	4,200
Super Silence Mode	34.4	2,600

Note: noise measured at 1m distance, static status, ambient 31dBA

## OPTICS

- 2 elements 14:1 zoom high-resolution optic system
- Beam aperture: 4° to 56°
- Fast motorised linear zoom
- 7 truncated edges 50 mm frontal lenses
- 170 mm front lens cluster

## LIGHT SOURCE

- 7 x 1,000 lumens RGB+W High-Power LED sources
- Total luminaire output: up to 5,200 lumens
- CRI: up to 86
- Rated life: L70: up to 40,000 hours
- Flicker free sources management, suitable for TV applications and all video recorded events

## MOVEMENT

- Extremely accurate positioning
- Moving-head operated via either 8 or 16 bit resolution
- High-resolution stepper motors operated via microprocessors ensure extreme accuracy and smooth movements.
- PAN and TILT automatic repositioning
- Moving-head range: infinite pan & tilt rotation

## COLOURS

- Sophisticated 4 colours RGB+W mixed, reaching high Colour Rendering Index
- Uniform light beam with no colour shadows, and rich saturated and pastel colour-hues
- 4.29 billion colours (8 bit resolution)
- Virtual colour wheel, including most usuals white colour temperature presets

## EFFECTS

- 2D & 3D graphical effects capabilities
- Effects can be coupled with beam, wash or matrix applications
- Built-in pattern effects with speed and fade controls for scenic applications
- Individual control of each pixels
- LiquidEffect™

## DIMMER / STROBE

- Electronic dimmer, allowing perfect light adjustment from 0 to 100% without colour variation
- White or colour strobe effect, with speed adjustment from 1 to 25 flashes per second

## SOFTWARE FEATURES

- Local DMX addressing of luminaire and optional parameters through its built-in LCD control panel
- Remote DMX addressing of luminaire and optional parameters through a standard RDM DMX controller
- Information menu including hour counter, temperature, software version

## HARDWARE FACILITIES

- Graphic LCD display for addressing and special functions settings, with flip function
- Clicking jog wheel to set functions
- Excess temperature protection
- Integrated wireless CRMX TIMo™ RDM receiver from LumenRadio™
- XLR 5 pin male and female connectors for DMX connection
- etherCON RJ45 IN / OUT connectors for ArtNet™ connection
- powerCON TRUE1 IN / OUT connectors for power connection

## CONTROL

- DMX 512 protocol, through DMX cable or wireless system
- DMX-RDM compatible
- Stand-alone mode and Master/Slave modes
- ArtNet™ & sACN protocol through Ethernet cable
- Local control panel, with LCD display
- Choice of 3 DMX modes (from 26 to 79 DMX channels)

## POWER SUPPLY

- Electronic supply with active PFC
- 120 to 240 Volts - 50/60Hz
- Power: 350 W maximum

## COOLING SYSTEM

- Advanced cooling system
- Self adjusting variable speed fans for quiet operation (Auto mode)
- Selectable auto, stage & silence ventilation modes
- Safety protection against temperatures excesses

## HOUSING

- Moving-head skeleton made of aluminium and steel metal plates
- Base in die-cast aluminium
- Heatsinks in aluminium
- Moulded covers in self-extinguishing fire retardant ABS PC (V0 class)
- Two sides handles for transportation
- Four heavy-duty feet for better stability
- IP20 protection rating
- Exterior finish: black (Carbon)

## INSTALLATION

- Fastening brackets system: two Omega 1/4 turn brackets designed for use with standard clamps
- Mounting points: four 1/4 turn locking fittings allowing installation of Omega brackets on luminaire
- Safety cable attachment point

## OPERATING PARAMETERS

- Operating positions: all (device on floor or fixed to a support)
- Maximum permitted ambient temperature (Ta max): 45°C (113°F)
- Minimum permitted ambient temperature (Ta min): -10°C (14°F)
- Minimum usage distance: 1.0 m (3.28 ft)

## COMPLIANCE

### EU (EMC & LVD)

- EMC Directive 2014/30/EU
- LVD Directive 2014/35/EU

### US (Safety & EMC)

- UL 1573
- FCC Part 15, Subpart B:2018

## SIZE

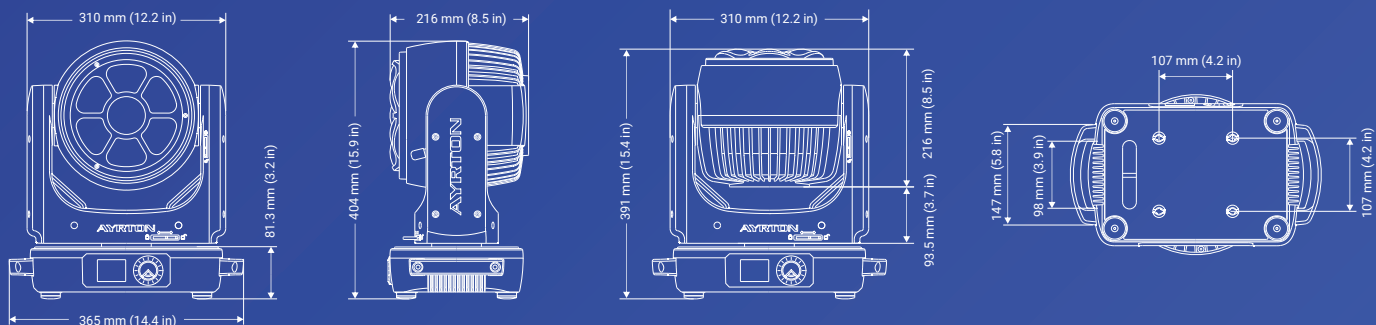
- Product: 365 x 404 x 233 mm (l x h x d)
- Flight-case foam: 420 x 438 x 280 mm (l x h x d)

## WEIGHT

- Product: 11.1 Kg

## PRODUCT CODES

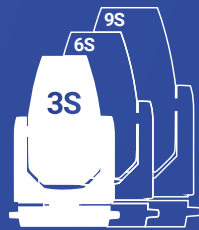
- 013250 : ZONDA 3 FX - MULTI-SOURCES 3 SERIES





**AYRTON**

Digital Lighting



[www.ayrton.eu](http://www.ayrton.eu)

12.2022