

ZONDA 9 FX

Share your universe



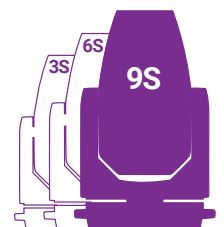
AYRTON

Digital Lighting



Your universe is unique. It has its own codes... its own language

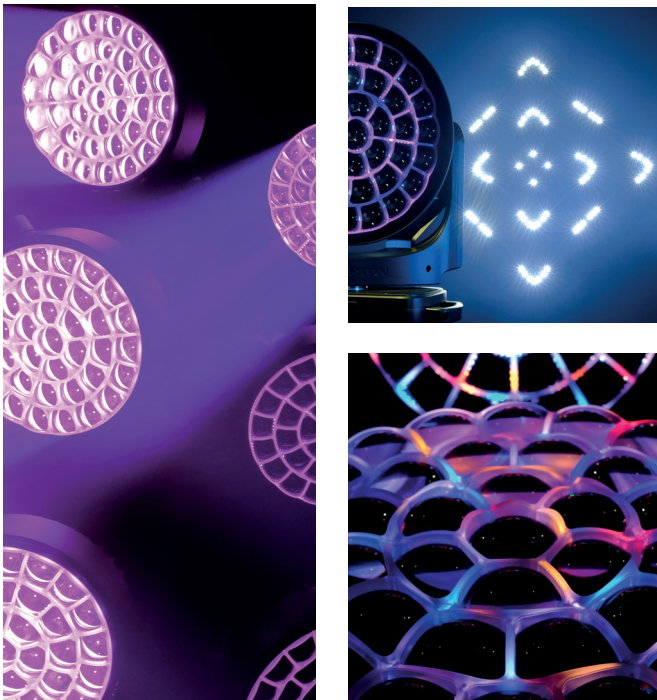
ZONDA 9 FX is an expert in stage effects.
A prolific fixture that can produce impressive
3D volumetric effects.



ZONDA 9 FX is the first luminaire in a new family of products devised for stage lighting, equipped with a high-performance 40-Watt LED source with RGB+W additive colour synthesis.

This fixture offers a proprietary optical system consisting of a wide dial of 37 lenses in PMMA, 384 mm in diameter, combined with 37 glass light guides with an output surface made of an optical micro-structure.

This LED/optical system combination can produce powerful light output of 25,000 lumens and a perfectly homogeneous mixture of pastel and saturated colours, regardless of the colour mix chosen.



Share your universe

The perfectly crisp separation between the light sources helps to reinforce the level of contrast.

Endowed with a 50 mm truncated transmitting lens with an optical surface equivalent to that of a 70 mm round lens, ZONDA 9 FX can obtain a highly intensive beam with a zoom ratio of 14:1 and a wide zoom range of 4° à 56°.

A new optimised cooling system, simplified lens guidance systems, and ever smarter design of the internal structure have made it possible to reduce the size and weight of the luminaire considerably Slim-21™.

37 x 50 mm
Frontal Lens



37 lenses in PMMA

Change of universe with ZONDA 9 FX

A new optimised cooling system, simplified lens guidance systems, and ever smarter design of the internal structure have made it possible to reduce the size and weight of the luminaire considerably Slim-21™.

ZONDA 9 FX is a versatile fully-equipped luminaire designed for a multitude of applications.

It borrows from the main features of the WASH version and offers infinite continuous rotation on the pan & tilt axes I.R.S.™. Individual control of each LED allows you to achieve 3D volumetric effects.



9 Series - Source
37 RGBW LED

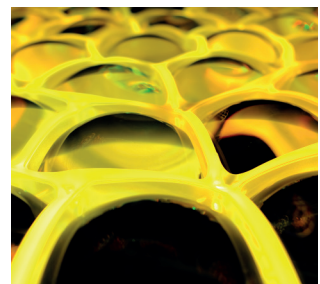
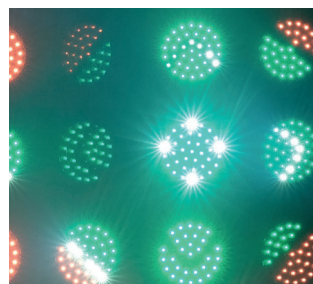
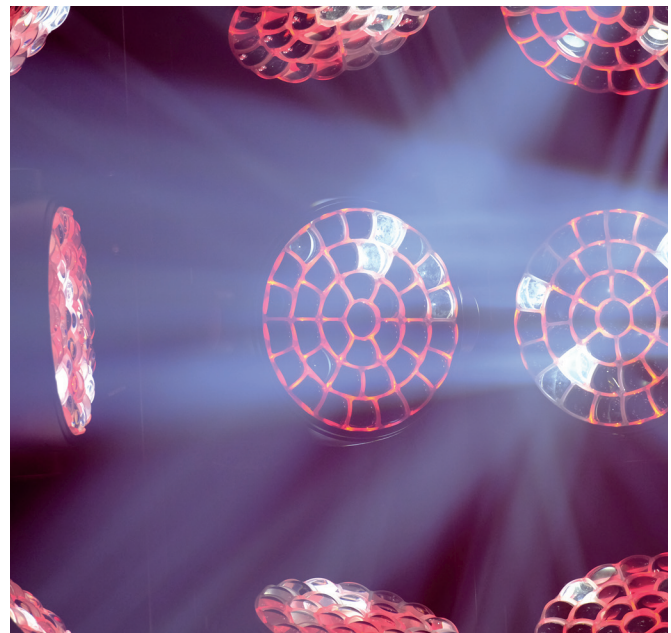
Zoom aperture
4.0° to 56°

Frontal Lens
37 x 50 mm

Weight
29.2 Kg



25,000 lumens





A monster on stage...
a creative...
dynamic...
psychedelic...
kaleidoscope
that will turn heads

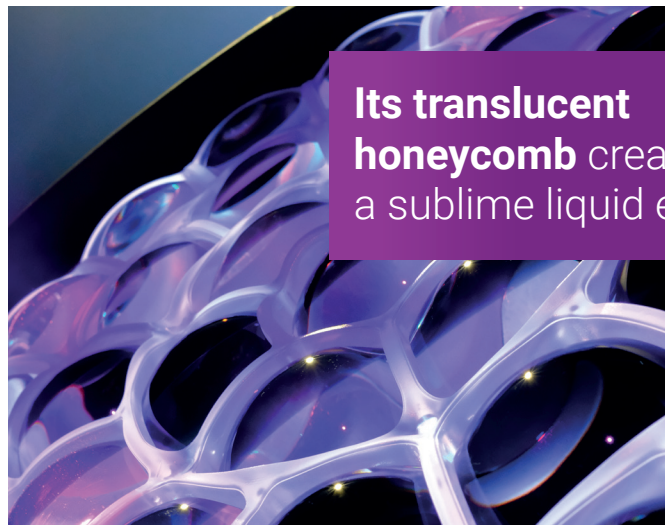
ZONDA 9 FX becomes hypnotic

ZONDA 9 FX can produce a high-definition liquid effect from between its main lenses to create complex graphic effects LiquidEffect™.

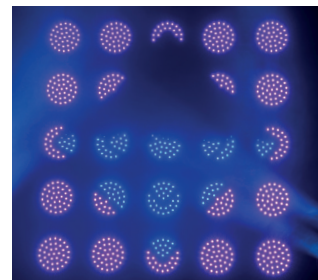
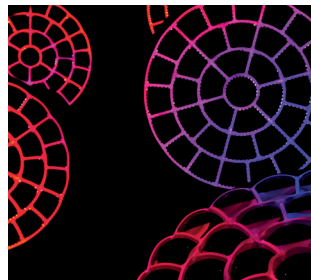
This effect can be used alone or in combination with the main LED matrix. ZONDA 9 FX is a marvel of technology geared for creativity.

True to our vision, AYRTON is disrupting the standards and revolutionizing the world of light with two exclusive creations that open the doors of perception.

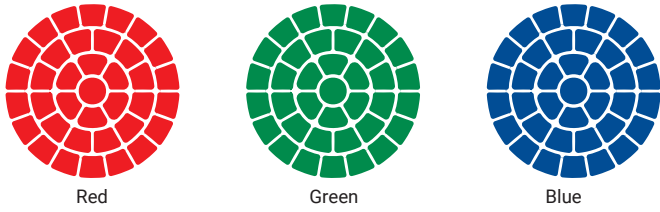
AYRTON continues to lead the way.



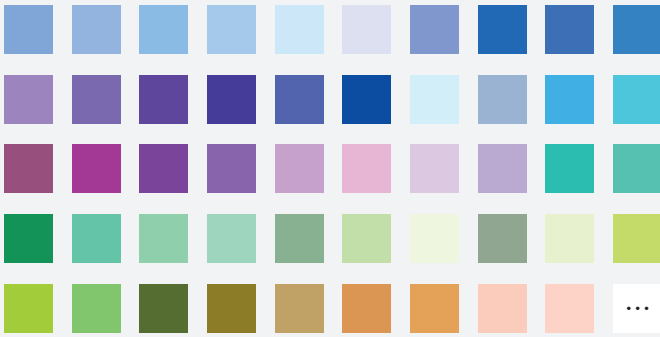
Its translucent
honeycomb creates
a sublime liquid effect



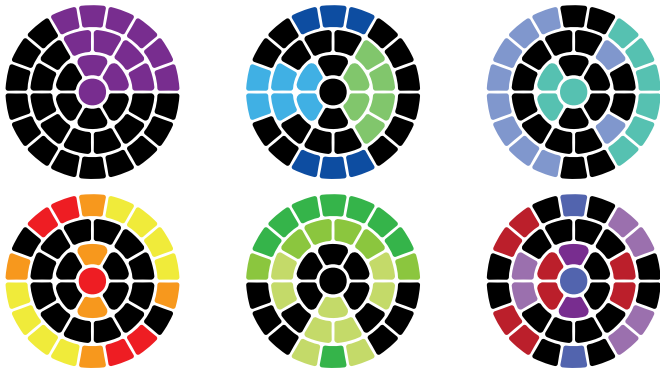
Colours



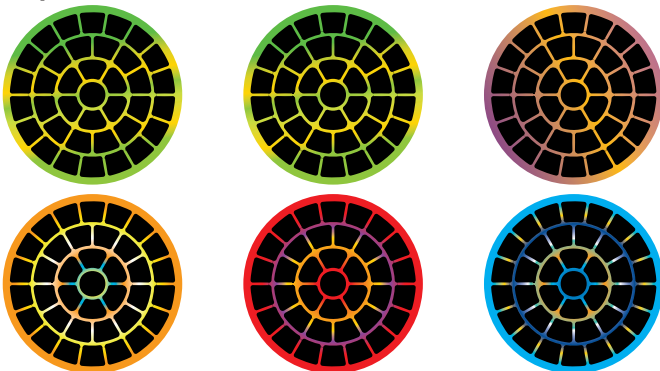
192 Pre-programmed colours



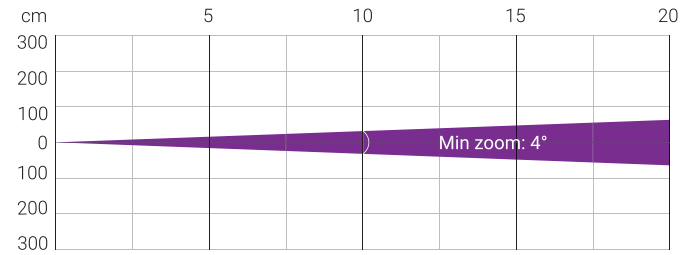
Pixel control



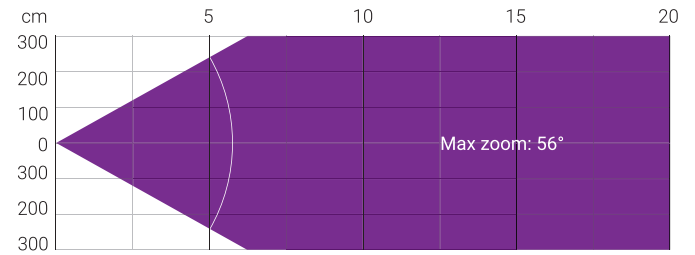
Liquid effect



Photometry



Distance (m)	5		10		15		20	
Unit	lux	∅	lux	∅	lux	∅	lux	∅
Red	18815		4704		2091		1176	
Green	36776		9194		4086		2298	
Blue	8961	0.35	2240	0.7	996	1.05	560	1.4
White	53025		13256		5892		3314	
RGB+W	106698		26675		11855		6669	



Distance (m)	5		10		15		20	
Unit	lux	∅	lux	∅	lux	∅	lux	∅
Red	419		105		47		26	
Green	781		195		87		49	
Blue	209	5.54	52	11.09	23	16.63	13	22.17
White	1092		273		121		68	
RGB+W	2183		546		243		136	

Total Flux	25,000 lm Zoom at 100% (Goniometer, Fan mode AUTO)	
CCT White chip	7600 (±500K)	
Ra White chip	68 (±2)	
TLCI White chip	43	
TM-30 White chip	Rf: 65.6 Rg: 97.1	
Fan Mode	Noise Level (dBA)	Flux (lm)
Auto Mode	45.8	24,942
Silence Mode	38.1	13,208
Super Silence Mode	35.1	6,714
Stage Mode	54.5	25,332

Note: noise measured at 1m distance, static status, ambient 31dBA

OPTICS

- 2 elements 14:1 zoom high-resolution optic system
- Beam aperture: 4° to 56°
- Fast motorised linear zoom
- 37 truncated edges 50 mm frontal lenses
- 384 mm front lens cluster

LIGHT SOURCE

- 37 x 1,000 lumens RGB+W High-Power LED sources
- Total luminaire output: up to 25,000 lumens
- CRI: up to 86
- Rated life: L70: up to 40,000 hours
- Flicker free sources management, suitable for TV applications and all video recorded events

MOVEMENT

- Extremely accurate positioning
- Moving-head operated via either 8 or 16 bit resolution
- High-resolution stepper motors operated via microprocessors ensure extreme accuracy and smooth movements.
- PAN and TILT automatic repositioning
- Moving-head range: infinite pan & tilt rotation

COLOURS

- Sophisticated 4 colours RGB+W mixed, reaching high Colour Rendering Index
- Uniform light beam with no colour shadows, and rich saturated and pastel colour-hues
- 4.29 billion colours (8 bit resolution)
- Virtual colour wheel, including most usuals white colour temperature presets

EFFECTS

- 2D & 3D graphical effects capabilities
- Effects can be coupled with beam, wash or matrix applications
- Built-in pattern effects with speed and fade controls for scenic applications
- Individual control of each pixels
- LiquidEffect™

DIMMER / STROBE

- Electronic dimmer, allowing perfect light adjustment from 0 to 100% without colour variation
- White or colour strobe effect, with speed adjustment from 1 to 25 flashes per second

SOFTWARE FEATURES

- Local DMX addressing of luminaire and optional parameters through its built-in LCD control panel
- Remote DMX addressing of luminaire and optional parameters through a standard RDM DMX controller
- Information menu including hour counter, temperature, software version

HARDWARE FACILITIES

- Graphic LCD display for addressing and special functions settings, with flip function
- Clicking jog wheel to set functions
- Excess temperature protection
- Integrated wireless CRMX TIMo™ RDM receiver from LumenRadio™
- XLR 5 pin male and female connectors for DMX connection
- etherCON RJ45 IN / OUT connectors for ArtNet™ connection
- powerCON TRUE1 male connectors for power connection

CONTROL

- DMX 512 protocol, through DMX cable or wireless system
- DMX-RDM compatible
- Stand-alone mode and Master/Slave modes
- ArtNet™ & sACN protocol through Ethernet cable
- Local control panel, with LCD display
- Choice of 3 DMX modes (from 26 to 199 DMX channels)

POWER SUPPLY

- Electronic supply with active PFC
- 120 to 240 Volts - 50/60Hz
- Power: 1,400 W maximum

COOLING SYSTEM

- Advanced cooling system
- Self adjusting variable speed fans for quiet operation (Auto mode)
- Selectable auto, stage & studio ventilation modes
- Safety protection against temperatures excesses

HOUSING

- Moving-head skeleton made of aluminium and steel metal plates
- Base in die-cast aluminium
- Heatsinks in aluminium
- Moulded covers in self-extinguishing fire retardant ABS PC (V0 class)
- Two sides handles for transportation
- Four heavy-duty feet for better stability
- IP20 protection rating
- Exterior finish: black (Carbon)

INSTALLATION

- Fastening brackets system: two Omega 1/4 turn brackets designed for use with standard clamps
- Mounting points: eight 1/4 turn locking fittings allowing installation of Omega brackets on luminaire
- Safety cable attachment point

OPERATING PARAMETERS

- Operating positions: all (device on floor or fixed to a support)
- Maximum permitted ambient temperature (Ta max): 45°C (113°F)
- Minimum permitted ambient temperature (Ta min): -10°C (14°F)
- Minimum usage distance: 3,0 m (6,56 ft)

COMPLIANCE

EU (EMC & LVD):

- EMC Directive 2014/30/EU
- LVD Directive 2014/35/EU

US (Safety & EMC):

- UL 1573
- FCC Part 15, Subpart B:2018

SIZE

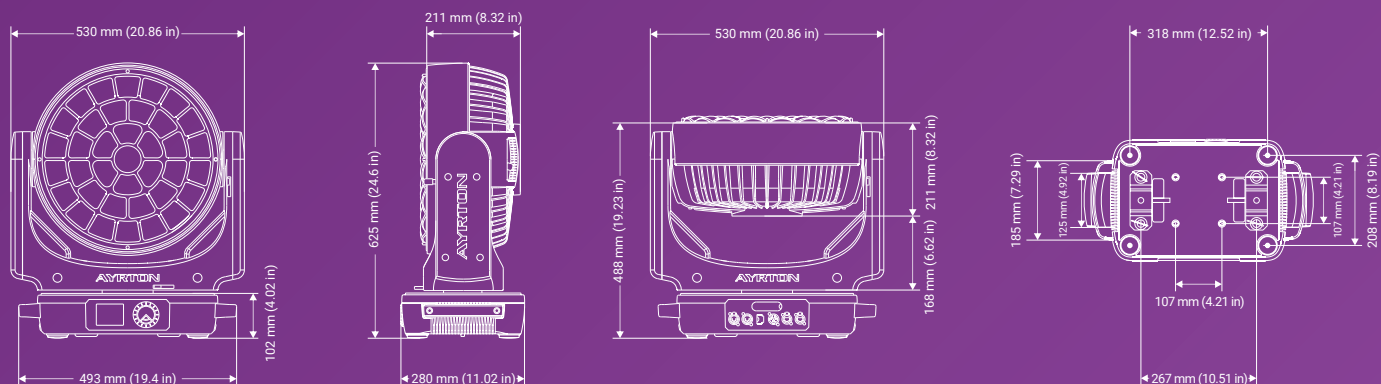
- Product: 530 x 625 x 280 mm (l x h x d)
- Flight-case Foam: 580 x 611 x 345 mm (l x h x d)

WEIGHT

- Product: 29.2 kg

PRODUCT CODES

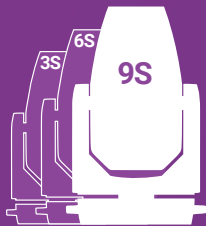
- 013750 : ZONDA 9 FX - MULTI-SOURCES 9 SERIES





AYRTON

Digital Lighting



www.ayrton.eu

04.2022