

KARIF LT

the creative wizard



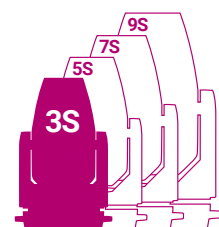
AYRTON

Digital Lighting



KARIF LT **the creative wizard**

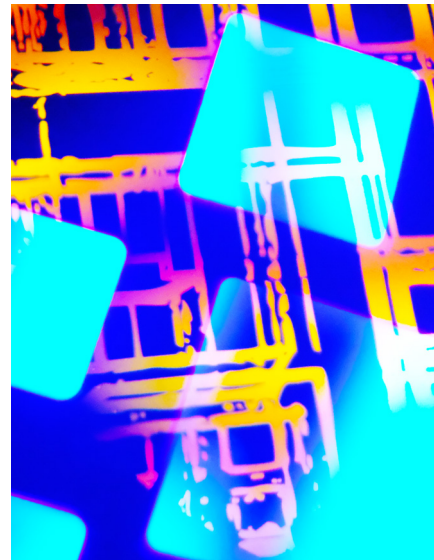
When all notion of time vanishes, and emotion takes over...
When the visual experience surpasses all expectations...
When the effects become simply impossible to describe...



You are experiencing the incredible power of KARIF LT... the magician... the sorcerer... the creative wizard.

KARIF is the first luminaire of the Ayrton LT product series designed for long-distance applications. A fixture with prodigious powers, capable of delivering dazzling effects never before seen and intense light beams of unbelievable density.

But don't try to typecast it. KARIF LT is amazingly versatile.



Lumens

14,000

Colour Temperature

6500 K

Beam Aperture

2.8° to 47°

Front Lens

168 mm

Weight

27 kg



KARIF LT is amazingly versatile

This remarkable, new ultra-compact 300 W beam-spot luminaire is equipped with a 168 mm frontal lens, offering an astronomical zoom ratio of 17:1 and a zoom range of 2.8° to 47°. To achieve an ultra-intense beam with an LED source, Ayrton uses an entirely new miniaturised high-efficiency low-etendue compact LED module. Calibrated at 8000 K, it can generate powerful metallic white light and deep, vivid colours suitable for this type of application.



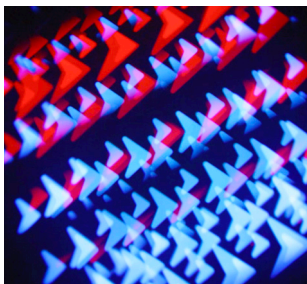
A marvel of technology

KARIF LT provides overall output of 14,000 lumens at a colour temperature of 6500 K. In this first hybrid LED luminaire, Ayrton has added continuous rotation to its panoramic movement to expand the possibilities for creating complex special effects.

Karif-LT offers full-featured standard equipment including a CMY colour mixing system and a multi-position colour wheel with a variable CTO, 4 colour-temperature correction filters, and 9 complementary colour filters on two concentric circles (patent pending). The effect section includes one wheel with nine interchangeable rotating HD glass gobos.



**14,000
lumens
6500 K**



17:1 Zoom ratio



The magician... the sorcerer... the creative wizard

For Karif-LT to reproduce multiple images, Ayrton has developed a totally new wheel of fixed multi-position gobos with instant access to 19 HD glass gobos and 20 metal gobos on three concentric circles.

Karif-LT is also equipped with a bi-directional continuous dynamic effects wheel. The prism effect system comprising four individually combinable prisms, coupled with 48 fixed and rotating gobos and an ultra-intense beam, can create unusual and spectacular kaleidoscopic effects.

**Fixed gobo wheel
19 HD glass gobos
20 metallic gobos**



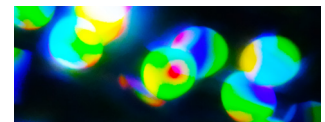
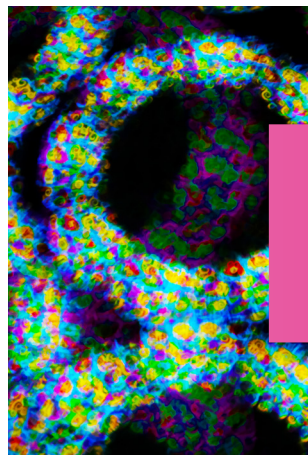


**Intense
light beam**
of unbelievable
density

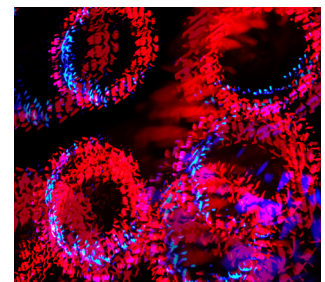
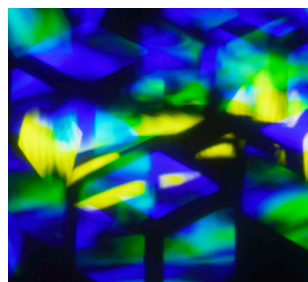
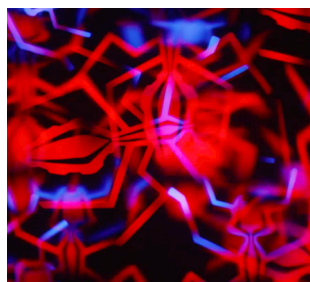
Push the limits...

KARIF LT will leave you spellbound and awaken your creative instinct. A unique multifunctional luminaire that invites you explore the unknown and push the limits. A marvel of technology that defies the rules and drives you to achieve creative perfection.

KARIF LT will inspire you to astonish your audience. In the endless pursuit of the indescribable, Ayrton continues to lead the way.



KARIF LT create unusual and **spectacular** kaleidoscopic effects



Colours



CMY colour mixing system



Congo Blue Green Orange Blue Red UV Amber



CTO Prog. 1/4 CTB 1/2 CTB 1/4 CTP 1/2 CTP Pink Magenta

Gobos

Gobos Ø 18 mm | Image Ø 13 mm



Image Ø 13 mm

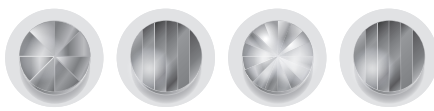


Effects wheel



Monochromatic

Combinable prisms



Circular 8F

Linear 6F

Circular 16F

Linear 6F

Frost filters



Light

Heavy

Dimmer



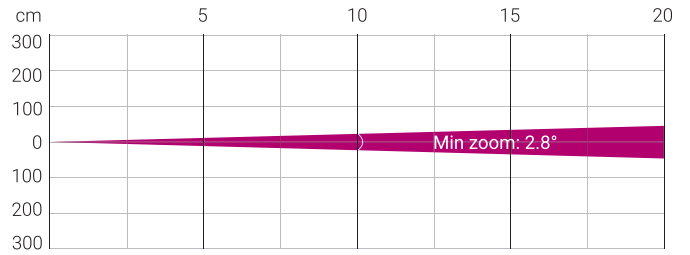
0 to 100 %

Strobe

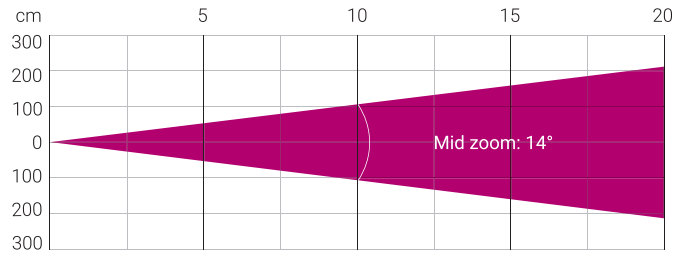


1 to 25 fl/sec.

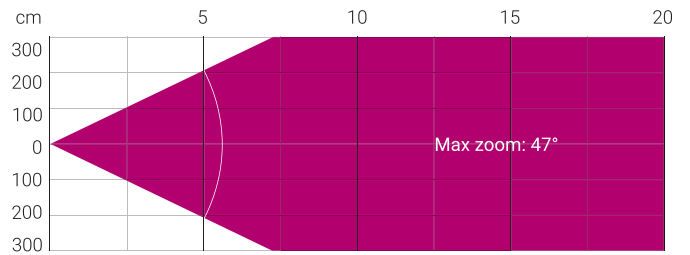
Photometry



Distance (m)	5		10		15		20	
Unit	lux	Ø	lux	Ø	lux	Ø	lux	Ø
White	130,080	0.24	32,600	0.48	14,500	0.72	8,456	0.96



Distance (m)	5		10		15		20	
Unit	lux	Ø	lux	Ø	lux	Ø	lux	Ø
White	14,500	1.19	3,625	2.38	1,611	3.57	906	4.76



Distance (m)	5		10		15		20	
Unit	lux	Ø	lux	Ø	lux	Ø	lux	Ø
White	1,326	4.35	331	8.7	147	13.05	83	17.4

Total Flux	14,000 lm Zoom at 41% (Integrating sphere)	
CCT LED Source	8000 (±500 K)	
CCT Luminaire	6500 (±500 K)	
Ra Luminaire	71.1 (Ra: 70)	
TLCI	46	
TM-30	Rf: 69.5 Rg: 92.7	

Fan Mode	Noise Level (dBA)	Flux (lm)
Auto Mode	45.5	13,900
Silence Mode	39	9,900
Stage Mode	47	14,000
Studio Mode	40.8	11,700

Note: noise measured at 1m distance, static status, ambient 31dBA

OPTICS

- 13-element 17:1 zoom high-resolution optic system
- Beam aperture: 2.8° to 47°
- Fast motorised linear zoom
- Tempered anti-reflective coated lenses
- 168 mm frontal lens for greater performance

LIGHT SOURCE

- 20,000 lumens, 8000 K white-light engine
- Total luminaire output: up to 14,000 lumens
- Colour temperature output: 6500 K
- CRI: greater than 70
- Rated source life: up to 40,000 hours
- Flicker-free source management suitable for TV applications and all video-recorded events

MOVEMENT

- Highly accurate positioning
- Moving-head operated with either 8 or 16-bit resolution
- High-resolution stepper motors operated via microprocessors to ensure extreme accuracy and smooth movement
- Pan and tilt automatic repositioning
- Moving-head range: infinite rotation (pan), 270° (tilt)

COLOURS

- Sophisticated colour mix system providing CMY colour mixing
- Fixed colour wheel with progressive CTO, 4 colour temperature correction and 9 complementary colours

GOBOS

- Indexable rotating gobo wheel with 9 HD glass gobos, plus open position
- Adjustable-speed rotating gobo in both directions
- Rotating Gobo diameter: 18.0 mm
- Fixed multi-position gobo wheel with instant access to 19 HD glass gobos and 20 metal gobos on three concentric circles (patent pending).
- Fixed & rotating gobo image diameter: 13.0 mm

FROST

- Heavy frost filter
- Light frost filter

EFFECTS

- Graphic animation effect-wheel with bi-directional continuous rotation
- Prism effect system comprising four combinable rotating prisms
- Sparkle effect: dynamic animation effect with speed and fade adjustment

DIMMER / STROBE

- Electronic dimmer, allowing perfect light adjustment from 0 to 100% without colour variation
- White or colour strobe effect, with speed adjustment from 1 to 25 flashes per second

SOFTWARE FEATURES

- Local DMX addressing of luminaire and optional parameters through its built-in LCD control panel
- Remote DMX addressing of luminaire and optional parameters through a standard RDM DMX controller
- Information menu including hour counter, temperature, software version

HARDWARE FEATURES

- Graphic LCD display for addressing and special functions settings, with flip function
- Clicking jog wheel to set functions
- Excess temperature protection
- Integrated wireless CRMX TIMo™ RDM receiver from LumenRadio™
- XLR 5-pin male and female connectors for DMX connection
- PowerCON TRUE1 male and female connectors for power connection

CONTROL

- DMX 512 protocol, through DMX cable or a wireless system
- DMX-RDM compatible
- Stand-alone mode and Master/Slave modes
- Local control panel, with LCD display
- Choice of 3 DMX modes (from 32 to 46 DMX channels)

POWER SUPPLY

- Electronic supply with active PFC
- 100 to 240 Volts – 50/60Hz
- Power: 550 W maximum

COOLING SYSTEM

- Advanced liquid cooling system
- Self-adjusting variable speed fans for quiet operation (Auto mode)
- Selectable ventilation user modes with a new Silent Mode
- Safety protection against temperature excesses

HOUSING

- Moving-head skeleton made of aluminium and steel metal plates
- Base in die-cast aluminium
- Aluminium and copper heatsinks
- Moulded covers in self-extinguishing fire-retardant ABS PC (V0 class)
- Two-side handles for transportation
- Four heavy-duty feet for better stability
- IP20 protection rating
- Exterior finish: black (carbon)

INSTALLATION

- Fastening-bracket system: two Omega ¼ turn brackets designed for use with standard clamps
- Mounting points: four ¼ turn locking fittings allowing installation of Omega brackets on luminaire
- Safety-cable attachment point

OPERATING PARAMETERS

- Operating positions: all (device on floor or fixed to a support)
- Maximum permitted ambient temperature (Ta max): 45° C (113° F)
- Minimum permitted ambient temperature (Ta min): -10° C (14° F)
- Minimum usage distance: 2 m (6.56 ft)

COMPLIANCE

EU (EMC & LVD):

- EMC Directive 2014/30/EU
- LVD Directive 2014/35/EU

US (Safety & EMC):

- UL 1573
- FCC Part 15, Subpart B: 2018

SIZE

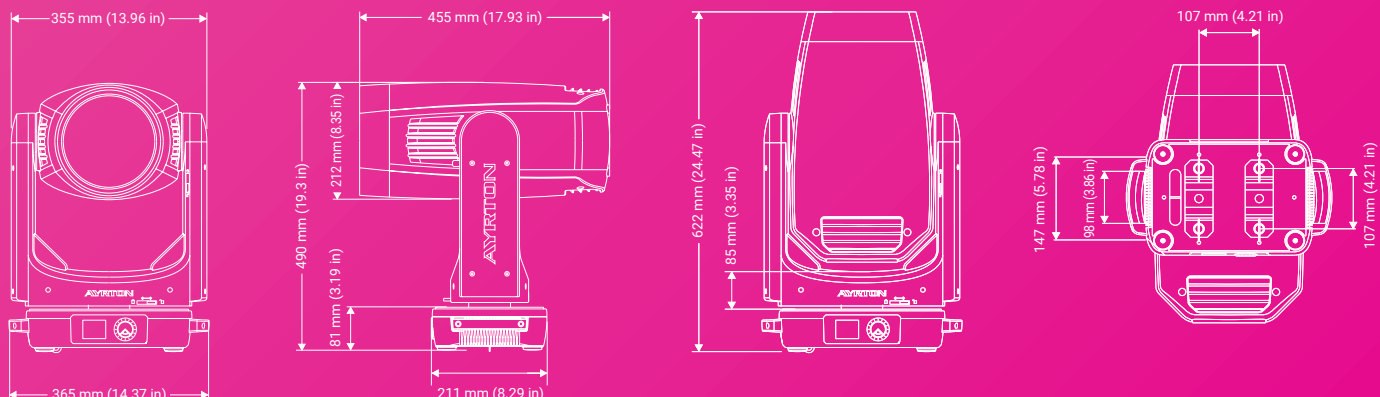
- Product: 365 x 622 x 212 mm (l x h x d)
- Flight-case foam: 430 x 660 x 280 mm (l x h x d)

WEIGHT

- Product: 27 kg

PRODUCT CODES

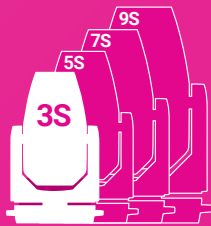
- 011170: KARIF-LT – CLASSICAL 3 SERIES





AYRTON

Digital Lighting



www.ayrton.eu

03.2020