

HURACÁN WASH

Just for a thrill



AYRTON

Digital Lighting



HURACÁN WASH Just for a thrill

We've all seen shows that make us feel unforgettable emotion, exalt us and awaken our senses. AYRTON has always felt that opera, theatre and dance have the power to transport us far away... to make us forget space and time.



AYRTON'S new wash luminaire is equipped with an optimised Fresnel lens that raises the standards of elegance and precision. A wash light that, in all its subtlety, continues a tradition of excellence.

When it comes to wash lights, the Fresnel lens is simply a must. The AYRTON Fresnel Optimisation System enhances the optical structure when using barndoors, geometric gobos or ovalisation lenses—offering a chance to be free from the usual constraints and operate the wash luminaires with the subtlety they deserve.



9 Series - Source
1000 W - 6500 K
 ST version

Lumens
52,000
 S version

Zoom aperture
6.2° to 75°

Front Lens
210 mm

Weight
42.5 Kg



HURACÁN WASH is available in S, ST or TC versions

With HURACÁN WASH and its Fresnel Optimisation System you will gain up to 10% intensity. Its proprietary optical system delivers a 12:1 zoom ratio and a zoom range of 6.2° at half peak to 75° at one-tenth peak.

Control your stage space and create a unique ambiance. HURACÁN WASH adopts the complex colour mixing system of HURACÁN Profile. Its double level of CMY saturation lets you obtain up to 281 trillion colours.

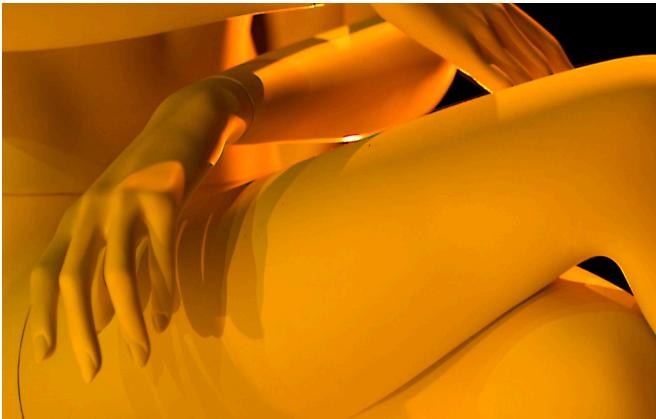
A triple variable colour temperature corrector allows subtle adjustment from 2700 K to 15000 K.



A luminaire that will thrill you

HURACÁN WASH is available in S, ST or TC versions that will cover all uses on stage. Their specific features make them unique and exceptional. Choose the right version of HURACÁN WASH according to your feeling.

For shows that require cooler, metallic white light, the S version offers a record luminous flux of 52,000 lumens, a colour temperature of 7000 K and a CRI of 70.



12:1 Zoom ratio



210 mm
Fresnel
frontal lens

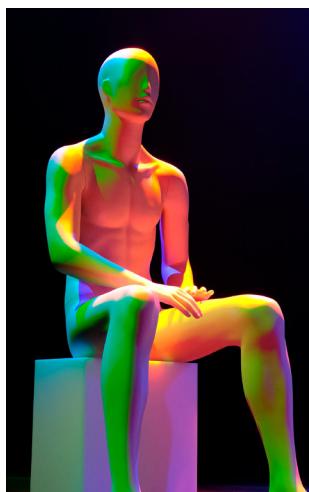


Create a unique ambiance!

HURACÁN WASH ST introduces a brand new monochromatic LED source specially developed for studio and theatre applications. This source delivers light output of 45,000 lumens and a D65 white point that allows perfect brilliant colour reproduction with a CRI greater than 80.

For applications requiring impeccable colour accuracy, the TC version offers a colour rendering index of over 95 with extremely high TM30 values and a colour temperature of 6000 K.

HURACÁN WASH luminaires come fully equipped from the factory. The barndoor system allows you to frame a 100% lighting surface with precision, whatever the positioning of the fixture. HURACÁN WASH also offers a wheel of seven rotating gobos. Its CMY and RGB animation wheel can create multicoloured effects.



A discreet,
extremely silent
machine



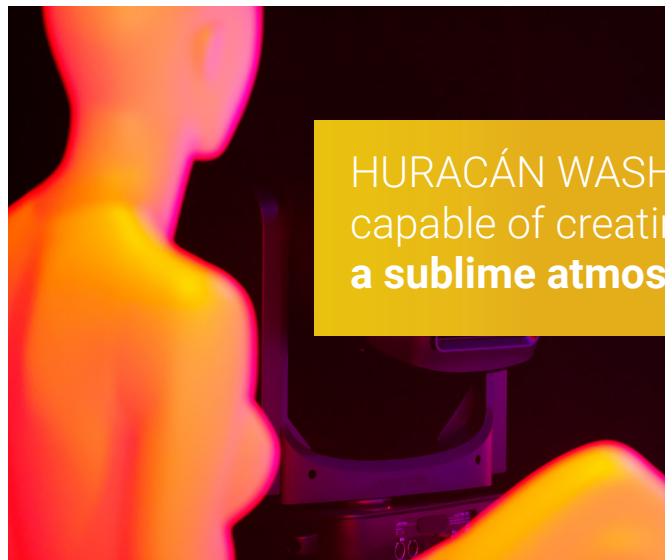


A colour rendering index of over 95 with extremely high TM30 values

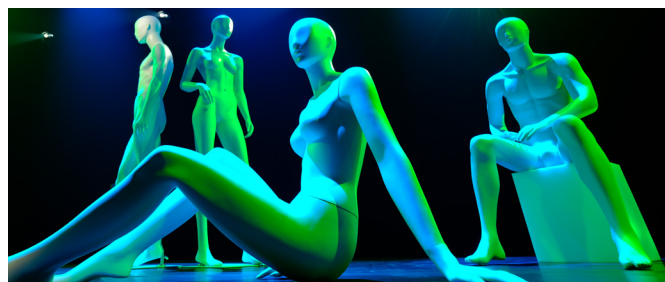
A wash light that continues a tradition of excellence

A variable linear frost completes the graphic tool palette along with a 15-blade iris diaphragm and a beam ovaliser filter. HURACÁN WASH is a discreet, extremely silent machine equipped with a next-generation liquid cooling system. With HURACÁN WASH, AYRTON has reinvented the wash luminaire by designing an avant-garde product capable of creating a sublime atmosphere. Designed for rapid scene changes, HURACÁN WASH is a formidable partner offering efficiency and reliability. A precision machine that provides total confidence for the most demanding users.

The care taken in all stages of the design, development and manufacture of this luminaire make it simply incomparable. In the endless pursuit of spectacular new emotions...



HURACÁN WASH is capable of creating a sublime atmosphere



Colours



CMY colour mixing system



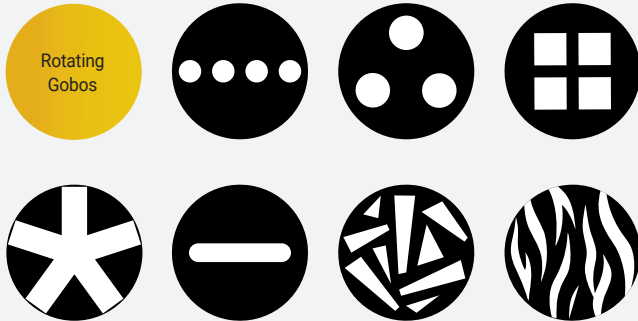
Variable CTB / CTO / CTP colour temperature correction



CTB Blue Green Orange Blue Red

Gobos

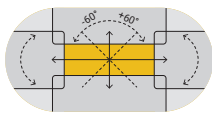
Gobos Ø 30 mm | Image Ø 25 mm



Framing system

Iris diaphragm

Progressive frost



100% surface area

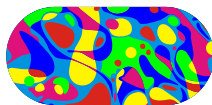


15% to 100% open



0% to 100%

Graphical animation effects wheel



CMY & RGB Colours

Beam shaper

Dimmer

Strobe

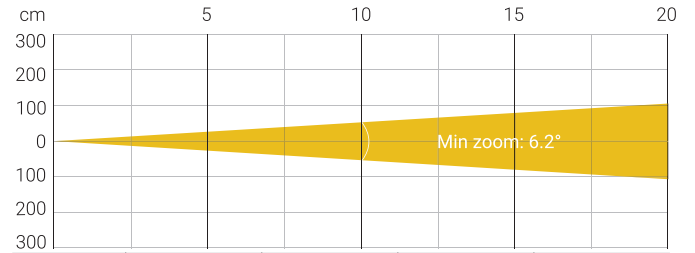


0 to 100 %

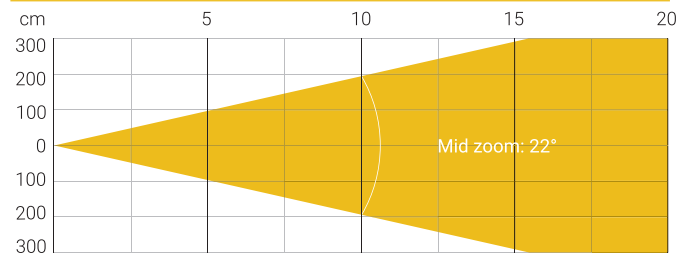


1 to 25 fl./sec.

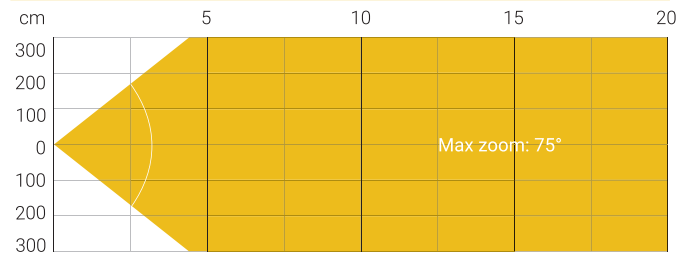
Photometry



Distance (m)	5		10		15		20	
Unit	lux	Ø	lux	Ø	lux	Ø	lux	Ø
S version	103,896		25,974		11,544		6,494	
ST version	84,330	0.54	21,083	1.08	9,370	1.62	5,271	2.17
TC version	63,440		15,860		7,049		3,965	



Distance (m)	5		10		15		20	
Unit	lux	Ø	lux	Ø	lux	Ø	lux	Ø
S version	13,929		3,482		1,548		871	
ST version	10,853	1.94	2,713	3.89	1,206	5.83	678	7.78
TC version	7,979		1,995		887		499	



Distance (m)	5		10		15		20	
Unit	lux	Ø	lux	Ø	lux	Ø	lux	Ø
S version	1,933		483		215		121	
ST version	1,715	7.67	429	15.35	191	23.02	107	30.69
TC version	1,235		309		137		77	

Version	S version	ST version	TC version
Total Flux (Integrating sphere)	52,100 lm	45,300 lm	33,900 lm
CCT LED Source	8000 (±400K)	6800 (±400K)	6800 (±400K)
CCT Luminaire	7000 (±500K)	6500 (±400K)	6000 (±500K)
Ra Luminaire	70 (±2)	80 (±2)	95 (±2)
TLCI	49	65	97
TM-30	Rf: 72.2 Rg: 92.8	Rf: 81.5 Rg: 92.2	Rf: 91.0 Rg: 100.1

Fan Mode (Noise Level)	S version	ST version	TC version
Auto Mode: 45.5 dBA	50,900 lm	43,600 lm	32,600 lm
Stage Mode: 51.2 dBA	52,100 lm	45,300 lm	33,900 lm
Silence Mode: 38.8 dBA	39,400 lm	32,400 lm	24,400 lm
Super Silence: 34.1 dBA	23,150 lm	18,800 lm	14,600 lm

Note: noise measured at 1m distance, static status, ambient 31dBA

OPTICS

- 13-element 12:1 zoom high-resolution optic system
- Beam aperture: 6.2° (half peak) to 75° (tenth peak)
- Fast motorised linear zoom
- Tempered anti-reflective coated lenses
- 210 mm Fresnel frontal lens

LIGHT SOURCE

HURACÁN WASH S

- 80,000 lumens white light engine
- Total luminaire output: up to 52,100 lumens (integrating sphere measurement, Fan mode AUTO)
- Colour temperature output: 7000 K
- CRI: greater than 70

HURACÁN WASH ST

- 68,000 lumens white light engine
- Total luminaire output: up to 45,000 lumens (integrating sphere measurement, Fan mode AUTO)
- Colour temperature output: 6500 K
- CRI: greater than 80

HURACÁN WASH TC

- 49,000 lumens white light engine
- Total luminaire output: up to 33,900 lumens (integrating sphere measurement, Fan mode AUTO)
- Colour temperature output: 6000 K
- CRI: greater than 95

HURACÁN WASH (ALL VERSIONS)

- Rated life (L70): up to 40,000 hours
- Flicker-free source management suitable for TV applications and all video-recorded events

MOVEMENT

- Extremely accurate positioning
- Moving-head operated via either 8- or 16-bit resolution
- High-resolution stepper motors to ensure extreme accuracy and smooth movement
- Pan and tilt automatic repositioning
- Moving-head range: 540° (pan), 260° (tilt)

COLOURS

- Complex colour mixing system with a double CMY saturation level capable of generating billions colours (patent pending)
- Variable CTB colour temperature correction
- Variable CTO colour temperature correction
- Variable CTP colour temperature correction
- Fixed colour wheel with six complementary colours

GOBOS

- Indexable rotating gobo wheel with seven high precision glass gobos, plus open position
- Adjustable-speed rotating gobo in both directions
- Gobo diameter: 30.0 mm
- Image diameter: 25.0 mm
- Gobo thickness: 1.1 mm

FRAMING SYSTEM

- 4 individually positionable barndoors on a 100% surface area in all positions
- Rotation of the barndoors module: +/- 60°

IRIS DIAPHRAGM

- Fast iris diaphragm with adjustable dynamic effects
- Iris range: 15% to 100% open

FROST

- 0% to 100% variable linear frost

EFFECTS

- CMY & RGB colour graphic animation effect-wheel with continuous rotation in both directions
- Indexable de-focusable rotating beam shaping optic

DIMMER / STROBE

- Electronic dimmer, allowing perfect light adjustment from 0 to 100% without colour variation
- Strobe effect, with speed adjustment from 1 to 25 flashes per second

SOFTWARE FEATURES

- Local DMX addressing of luminaire and optional parameters through its built-in LCD control panel
- Remote DMX addressing of luminaire and optional parameters through a standard RDM DMX controller
- Information menu including hour counter, temperature, software version

HARDWARE FEATURES

- Graphic LCD display for addressing and special functions settings, with flip function
- Clicking jog wheel to set functions
- Excess temperature protection
- Integrated wireless CRMX TiMo RDM receiver from LumenRadio
- XLR 5 pin male and female connectors for DMX connection
- Ethercon RJ45 IN / OUT connectors for ArtNet connection
- PowerCON TRUE1 male connector for power connection

CONTROL

- DMX 512 protocol, through DMX cable or a wireless xsystem
- DMX-RDM compatible
- Stand-alone mode and Master/Slave modes
- ArtNet & sACN protocol through Ethernet cable
- Local control panel, with LCD display
- Choice of 3 DMX modes (from 39 to 61 DMX channels)

POWER SUPPLY

- Electronic supply with active PFC
- 120 to 240 Volts – 50/60Hz
- Power: 1,470 W maximum

COOLING SYSTEM

- Advanced liquid cooling system
- Self-adjusting variable speed fans for quiet operation (Auto mode)
- Selectable ventilation user modes including Super Silent Mode
- Safety protection against excess temperature

HOUSING

- Moving-head skeleton made of aluminium and steel metal plates
- Base in die-cast aluminium
- Heatsinks in aluminium and copper
- Moulded covers in self-extinguishing fire retardant ABS PC (V0 class)
- Two-side handles for transportation
- Four heavy-duty feet for better stability
- IP20 protection rating
- Exterior finish: black (Carbon)

INSTALLATION

- Fastening bracket system: two Omega ¼ turn brackets designed for use with standard clamps
- Mounting points: eight ¼ turn locking fittings allowing installation of Omega brackets on luminaire
- Safety cable attachment point

OPERATING PARAMETERS

- Operating positions: all (device on floor or fixed to a support)
- Maximum permitted ambient temperature (Ta max): 45° C (113° F)
- Minimum permitted ambient temperature (Ta min): -10° C (14° F)
- Minimum usage distance: 3.0 m (9.84 ft.)

COMPLIANCE

EU (EMC & LVD):

- EMC Directive 2014/30/EU
- LVD Directive 2014/35/EU

US (SAFETY & EMC)

- UL 1573
- FCC Part 15, Subpart B:2018

SIZE

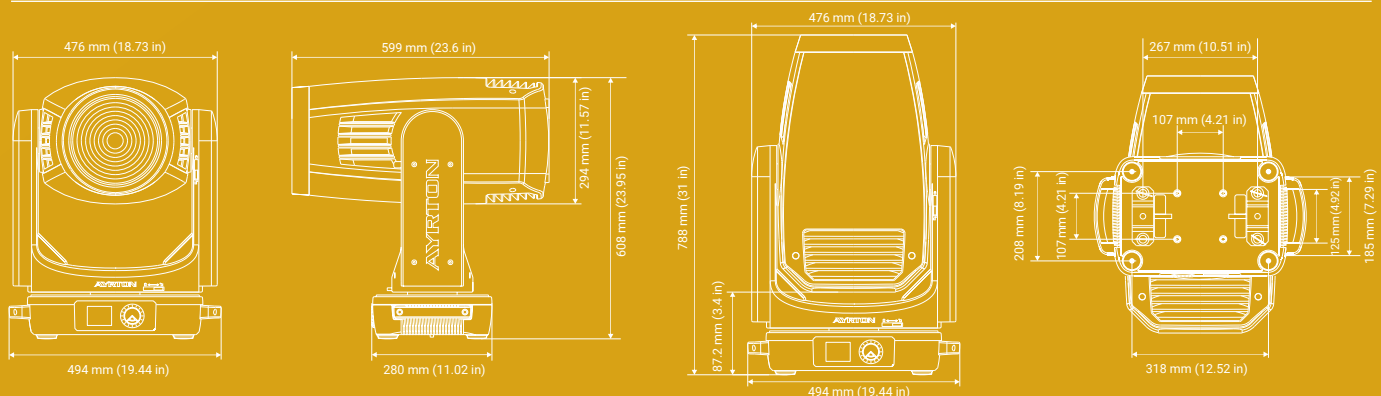
- Product: 494 x 788 x 294 mm (l x h x d)
- Flight-case foam: 715 x 555 x 630 mm (l x h x d)

WEIGHT

- Product: 42.5 kg

PRODUCT CODES

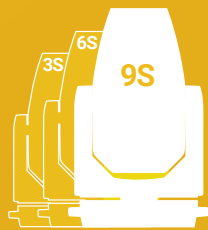
- 011880: HURACÁN WASH S - CLASSICAL 9 SERIES
- 011883: HURACÁN WASH ST - CLASSICAL 9 SERIES
- 011885: HURACÁN WASH TC - CLASSICAL 9 SERIES





AYRTON

Digital Lighting



www.ayrton.eu

10.2022