

HURACÁN PROFILE

graphicadelic power



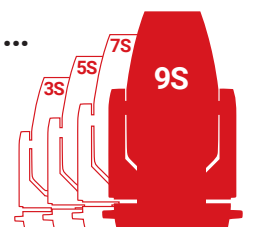
AYRTON

Digital Lighting



Huracán Profile graphicadelic power

Whether you're into pop... rock... or psychedelic...
Huracán Profile... the new profile luminaire designed by Ayrton...
is literally mind-blowing.



With its 1,000 W high-efficiency LED module and powerful, oversized cooling system, HURACÁN PROFILE delivers unbelievable light output... A marvel of technology that can produce a trillion shades of colour. Unheard of!

HURACÁN PROFILE offers mind-blowing creative potential. Equipped with new effects cassettes and graphic animation wheels, it will stimulate your eye and boost your artistic impulses.



Lumens

53,000

Colour temperature

7000 K

Native CRI

greater than 70

Beam Aperture

6° to 60°

Front Lens

178 mm



The graphic revolution has only just begun

HURACÁN PROFILE is a marvel of technology that brings exceptional light output to a standard-equipment luminaire in a class by itself – a formidable graphical tool for enhancing creativity. Fitted with a next-generation oversized cooling system and a high-efficiency 1,000 W LED module, HURACÁN PROFILE produces record output of 53,000 lumens at a colour temperature of 7000 K when operating at a steady state. For this exceptional luminaire, AYRTON has developed an entirely new complex colour mixing system capable of generating trillions of colours (patent pending).



Imagining and designing mind-blowing profile luminaires is one of our obsessions...

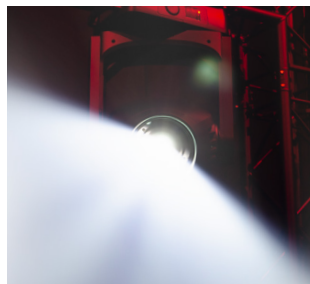
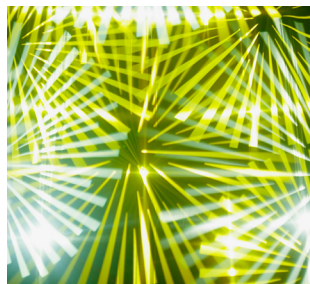
A triple variable colour temperature corrector allows subtle adjustment from 2700 K to 15000 K and offers noticeable CRI improvement. Designed to project complex graphical effects, HURACÁN PROFILE boasts specifically developed optics that deliver an extremely uniform flat beam with no hot spot and reproduce high-definition images. The proprietary optical system, equipped with a 178 mm frontal lens, uses 13 lenses, producing an 10:1 zoom ratio and a zoom range of 6° to 60°.



10:1 Zoom ratio



Two 7-position wheel for interchangeable effects cassettes or gobos

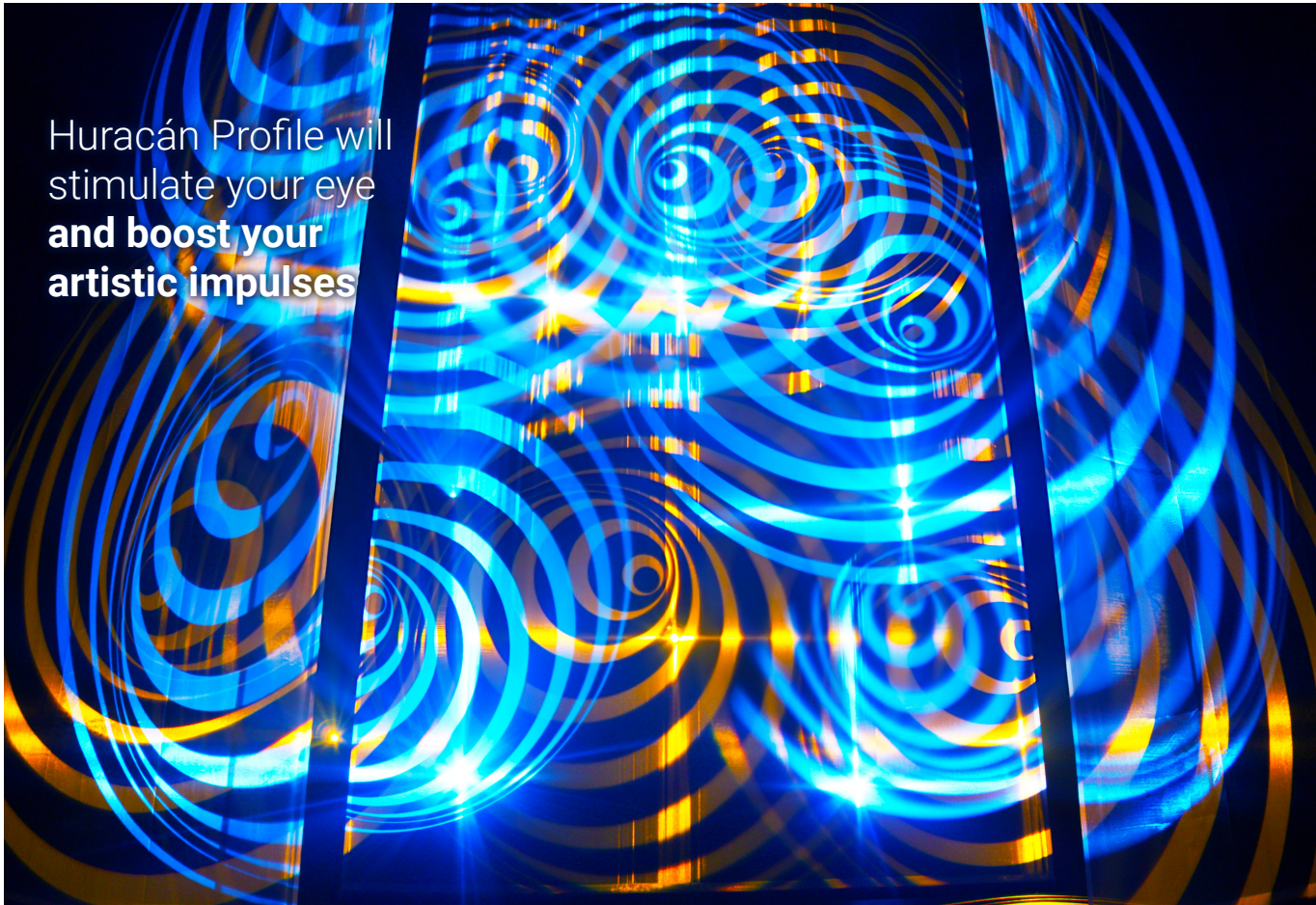


With Huracán Profile, you'll feel the urge to push your creative boundaries

HURACÁN PROFILE offers an advanced framing section, which allows accurate positioning of four shutter blades on a 100% surface area in all positions, so that the user can frame any object regardless of the luminaire's position. HURACÁN PROFILE is provided with an amazingly complete graphical system with one 7-position wheel for interchangeable effects cassettes or gobos. The wheel is fitted with 5 rotating gobos and 2 effects cassettes that can create dynamic effects by superimposing two complementary inverted images in counter rotation (patent pending). A second interchangeable gobo wheel is equipped with 7 rotating gobos.

CMY & RGB
animation
effects wheel





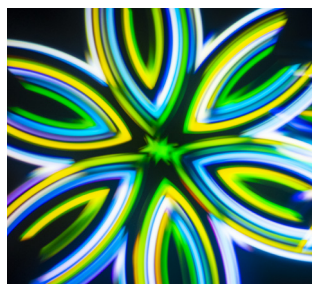
Huracán Profile will stimulate your eye **and boost your artistic impulses**

In the endless pursuit of the total graphicadelic experience...

A monochromatic multi-position effects wheel allows horizontal, vertical or axial scrolling for creating flame, water or radiant effects (patent pending). A multi-layer CMY & RGB wheel can generate multicolour effects. The gobos, cassettes and effects wheel are made of high-definition tempered glass. Additionally, standard features in HURACÁN PROFILE include a 15-blade iris diaphragm, a light and a heavy frost filter, 2 rotating prisms, a 5-facet circular and a 4-facet linear prism. HURACÁN PROFILE is the ultimate graphical tool for applications requiring power and refinement.



Two double-layer indexable rotating effects cassettes



Colours



CMY colour mixing system



Variable CTB / CTO / CTP colour temperature correction



1/4 CTB Congo Blue Green Orange Blue Red

Gobos

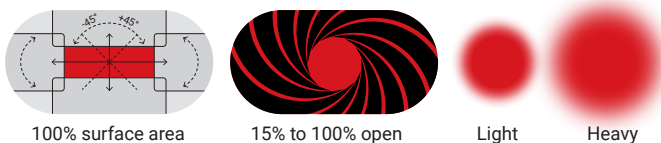
Gobos Ø 30 mm | Image Ø 25 mm



Framing system

Iris diaphragm

Frost filters



100% surface area

15% to 100% open

Light

Heavy

Graphical animation effects wheel



Monochromatic

CMY & RGB Colours

Prisms

Dimmer

Strobe



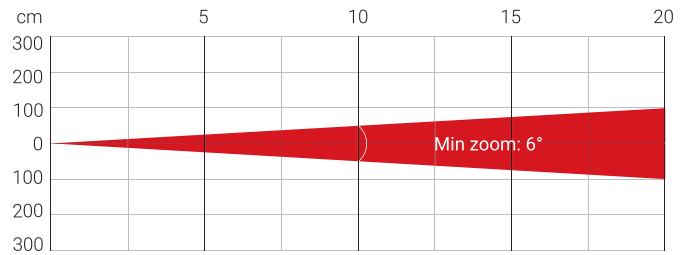
Circular

Linear

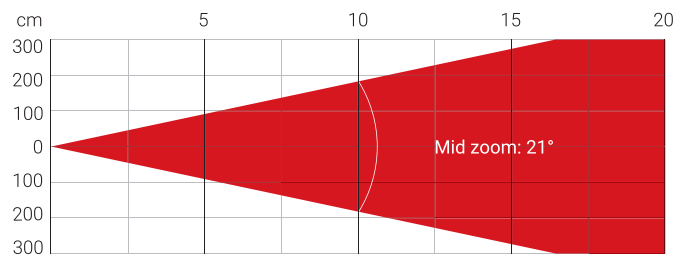
0 to 100 %

1 to 25 fl./sec.

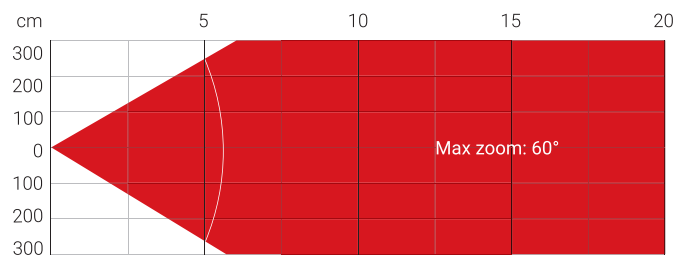
Photometry



Distance (m)	5		10		15		20	
Unit	lux	Ø	lux	Ø	lux	Ø	lux	Ø
White	96,980	0.52	23,440	1.04	10,450	1.56	5,913	2.08



Distance (m)	5		10		15		20	
Unit	lux	Ø	lux	Ø	lux	Ø	lux	Ø
White	16,980	1.85	4,491	3.62	2,199	5.30	1,296	7.10



Distance (m)	5		10		15		20	
Unit	lux	Ø	lux	Ø	lux	Ø	lux	Ø
White	2,459	5.83	736	11.66	356	17.49	153	23.32

Total Flux	52,900 lm Zoom at 41.5% (Integrating sphere)
------------	--

CCT LED Source	8000 (±400 K)
CCT Luminaire	7000 (±400 K)
Ra Luminaire	72 (Ra: 70)
TLCI	49
TM-30	Rf: 69.9 Rg: 93

Fan Mode	Noise Level (dBA)	Flux (lm)
Auto Mode	47.3	50,900
Silence Mode	42.0	42,300
Super Silence Mode	40.5	37,800
Stage Mode	49.4	52,900

Note: noise measured at 1m distance, static status, ambient 31dBA

OPTICS

- 13-elements 10:1 zoom high-resolution optic system
- Beam aperture: 6° to 60°
- Fast motorised linear zoom
- Tempered anti-reflective coated lenses
- 178 mm frontal lens for greater performance

LIGHT SOURCE

- 75,000 lumens 8000 K white light engine
- Total luminaire output: up to 53,000 lumens
- Colour temperature output: 7000 K
- CRI: greater than 70
- Rated life (L70): up to 40,000 hours
- Flicker-free source management suitable for TV applications and all video-recorded events

MOVEMENT

- Extremely accurate positioning
- Moving-head operated via either 8- or 16-bit resolution
- High-resolution stepper motors operated via microprocessors to ensure extreme accuracy and smooth movement
- Pan and tilt automatic repositioning
- Moving-head range: 540° (pan), 270° (tilt)

COLOURS

- Complex CMY colour mixing system capable of generating billions colours (patent pending)
- Variable CTB colour temperature correction
- Variable CTO colour temperature correction
- Variable CTP colour temperature correction
- Fixed colour wheel with six complementary colours

GOBOS

- Indexable rotating double layer cassette wheel with 2 effect cassettes and 5 high-precision glass gobos plus open position
- Indexable rotating gobo wheel with 7 high-precision glass gobos, plus open position
- Adjustable-speed rotating cassette and gobo in both directions
- Gobo diameter: 30.0 mm
- Image diameter: 25.0 mm
- Gobo thickness: 1.1 mm

FRAMING SYSTEM

- 4 individually positionable shutter blades on a 100% surface area in all positions
- Rotation of the framing system module: +/- 45°

IRIS DIAPHRAGM

- Fast iris diaphragm with adjustable dynamic effects
- Iris range: 15% to 100% open

FROSTS

- 2 frost filters: one light, one heavy

EFFECTS

- Monochromatic multi-position graphical animation effects wheel with continuous rotation in both directions
- CMY & RGB colour graphic animation effect-wheel with continuous rotation in both directions
- 2 rotating and indexable prisms: one 5-facet circular, one 4-facet linear
- Sparkle effect: dynamic animation effect with speed and fade adjustment

DIMMER / STROBE

- Electronic dimmer, allowing perfect light adjustment from 0 to 100% without colour variation
- Strobe effect, with speed adjustment from 1 to 25 flashes per second

SOFTWARE FEATURES

- Local DMX addressing of luminaire and optional parameters through its built-in LCD control panel
- Remote DMX addressing of luminaire and optional parameters through a standard RDM DMX controller
- Information menu including hour counter, temperature, software version

HARDWARE FEATURES

- Graphic LCD display for addressing and special functions settings, with flip function
- Clicking jog wheel to set functions
- Excess temperature protection
- Integrated wireless CRMX TIMo™ RDM receiver from LumenRadio™
- XLR 5 pin male and female connectors for DMX connection
- EtherCON RJ45 IN / OUT connectors for ArtNet™
- PowerCON TRUE1 male connector for power connection

CONTROL

- DMX 512 protocol, through DMX cable or a wireless system
- DMX-RDM compatible
- Stand-alone mode and Master/Slave modes
- ArtNet™ & sACN protocol through Ethernet cable
- Local control panel, with LCD display
- Choice of 3 DMX modes (from 44 to 70 DMX channels)

POWER SUPPLY

- Electronic supply with active PFC
- 120 to 240 Volts - 50/60 Hz
- Power: 1,470 W maximum

COOLING SYSTEM

- Advanced liquid cooling system
- Self-adjusting variable speed fans for quiet operation
- Selectable ventilation user's modes with a new Silent Mode
- Safety protection against temperatures excesses

HOUSING

- Moving-head skeleton made of aluminium and steel metal plates
- Base in die-cast aluminium
- Heatsinks in aluminium and copper
- Moulded covers in self-extinguishing fire retardant ABS PC (V0 class)
- Two-side handles for transportation
- Four heavy-duty feet for better stability
- IP20 protection rating
- Exterior finish: black (Carbon)

INSTALLATION

- Fastening brackets system: two Omega ¼ turn brackets designed for use with standard clamps
- Mounting points: eight ¼ turn locking fittings allowing installation of Omega brackets on luminaire
- Safety cable attachment point

OPERATING PARAMETERS

- Operating positions: all (device on floor or fixed to a support)
- Maximum permitted ambient temperature (Ta max): 45 °C (113 °F)
- Minimum permitted ambient temperature (Ta min): -10 °C (14 °F)
- Minimum usage distance: 2.0 m (6.56 ft)

COMPLIANCE

EU (EMC & LVD):

- EMC Directive 2014/30/EU
- LVD Directive 2014/35/EU

US (Safety & EMC):

- UL 1573
- FCC Part 15, Subpart B: 2018

SIZE

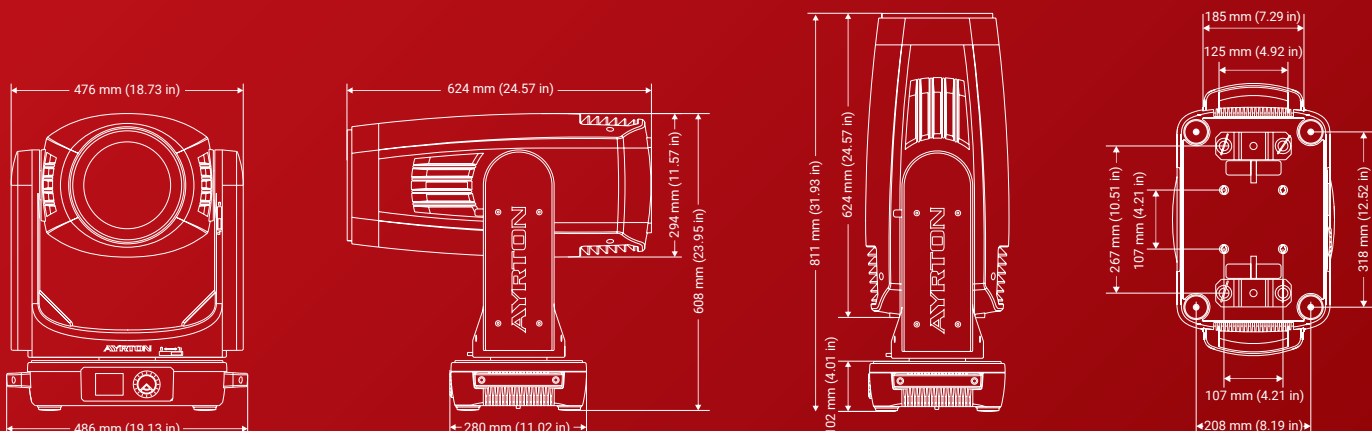
- Product: 486 x 811 x 294 mm (l x h x d)
- Flight-case foam: 715 x 555 x 630 mm (l x h x d)

WEIGHT

- Product: 44.0 kg

PRODUCT CODES

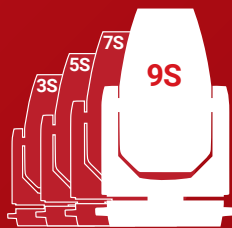
- 011860: HURACÁN PROFILE - CLASSICAL 9 SERIES





AYRTON

Digital Lighting



www.ayrton.eu

09.2019