

HURACÁN LT

aim far, aim with precision

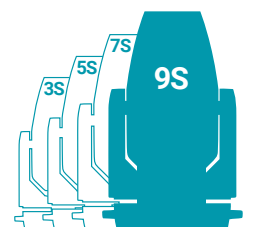


AYRTON
Digital Lighting



Huracán LT **aim far, aim with precision**

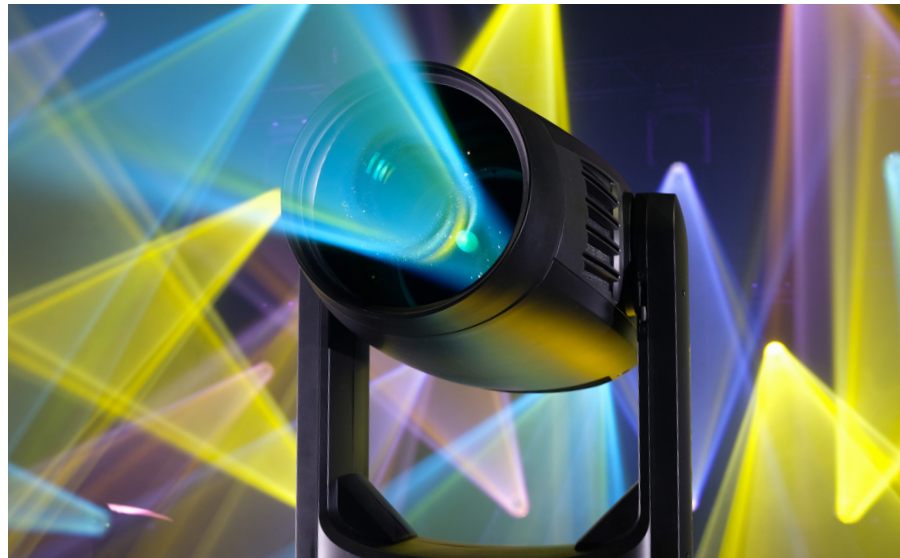
Creating light for a stadium or arena show is a privilege reserved only for exceptional machines.



Faced with the immensity of a venue, only the most powerful, feature-rich, and advanced luminaires can compete in terms of creativity to put on a show that is both spectacular and unforgettable.

This first long-range LED luminaire designed by AYRTON spearheads the LT product series.

HURACÁN LT a fixture that generates an ultra-intense beam with the utmost precision designed for lighting the biggest stages, ideal for creating the kind of choreography that is as graphic as it is breathtaking.



Lumens

51,000

Colour temperature

6700 K

Native CRI

greater than 70

Beam Aperture

3.5° to 53°

Front Lens

225 mm



A luminaire that will take you on a sublime and creative journey

HURACÁN LT can project over extreme distances, targeting a far-off subject with nuance, finesse, and power.

To achieve this ultra-intense beam, AYRTON has developed oversized optics of 225 mm weighing in at 7 kg, an ideal balance requiring months of research and development.

The proprietary optical system has 13 lenses, delivering a 15-to-1 zoom ratio and a zoom range of 3.5 to 53°.

Fitted with a next-generation, oversized liquid phase-change cooling system and a new high-efficiency 1000-Watt LED module, HURACÁN LT delivers record light output of 51,000 lumens at a colour temperature of 6700 Kelvin.



Huracán LT is a luminaire that will exceed your expectations

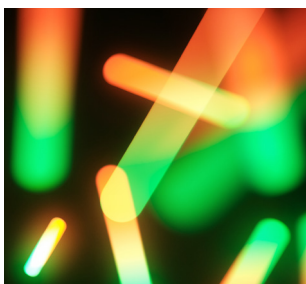
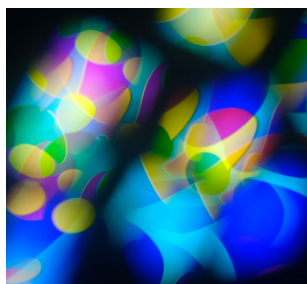
HURACÁN LT is truly striking: It uses the same revolutionary complex colour mixing system as HURACÁN PROFILE offering a double saturation level that can obtain over a billion colours.

A triple variable colour temperature corrector allows subtle adjustment from 2700 to 15,000 Kelvin and offers noticeable CRI improvement.

There is a six-position complementary colour wheel.



Two 7-position wheel for interchangeable effects cassettes or gobos



15:1 Zoom ratio



Unleash your creativity and offer your audiences new experiences!

HURACÁN LT features an advanced framing section, allowing you to accurately position the four shutter blades on a 100% surface area in all positions.

Fitted with multiple optical tools designed for shaping light, HURACÁN LT is factory-equipped with a removable high-transmission diffusion filter that can erase the edge of the beam without changing its angle.

The progressive linear frost system allows precision adjustment of the desired diffusion level for creating artificial wash effects.

CMY & RGB animation effects wheel



Huracán LT is the ultimate tool for both **stadiums and arenas**



New graphic horizons will open up

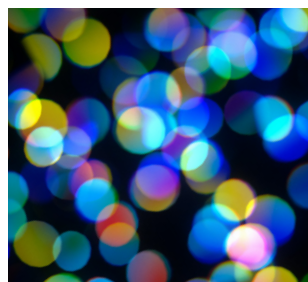
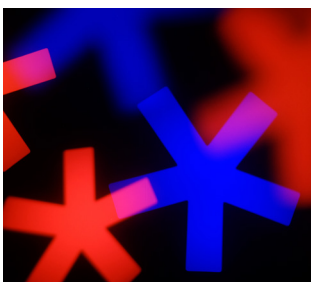
The effects section includes two superimposed rotating gobo wheels each with seven HD glass gobos, a monochromatic multi-position effects wheel for horizontal, vertical or axial scrolling, creating flame, water or radiant effects a multilayer CMY RGB wheel for unique multicolour effects, two combinable image-multiplying rotating prisms – one linear with four facets, and the other circular with five facets, a 15-blade iris diaphragm and an electronic dimmer allowing perfect light adjustment from 0 to 100% without colour variation.

With HURACÁN LT, AYRTON shakes up the world of light and offers amazing new perspectives HURACÁN LT is the ultimate tool for both stadiums and arenas...

In the endless pursuit of the intense experience.



Oversized optic of 225 mm
weighing in at 7 kg



Colours



CMY colour mixing system



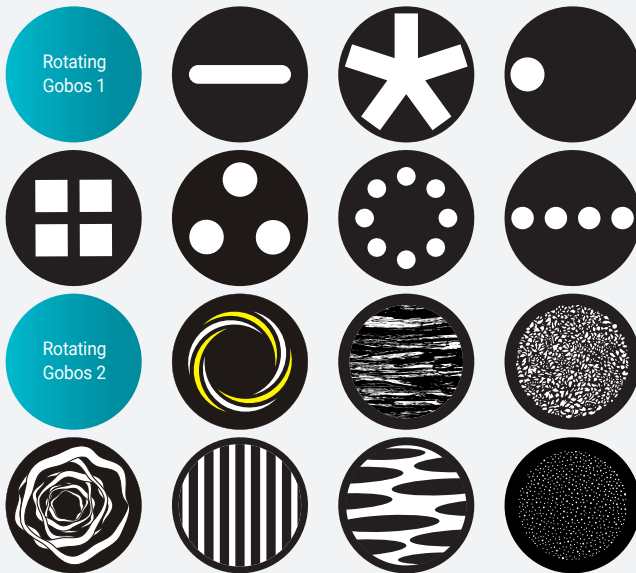
Variable CTB / CTO / CTP colour temperature correction



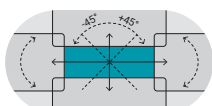
1/4 CTB Congo Blue Green Orange Blue Red

Gobos

Gobos Ø 30 mm | Image Ø 25 mm



Framing system



100% surface area

Iris diaphragm



15% to 100% open

Frost filters

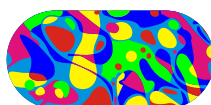


Light Heavy

Graphical animation effects wheel



Monochromatic



CMY & RGB Colours

Prisms



Circular Linear

Dimmer



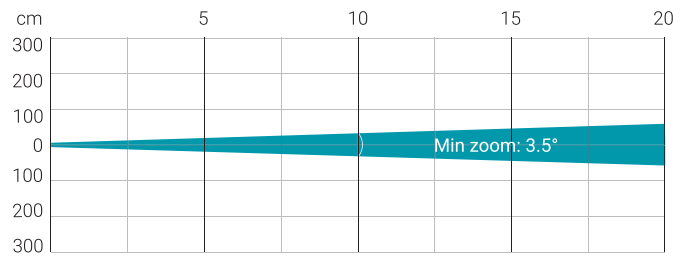
0 to 100 %

Strobe



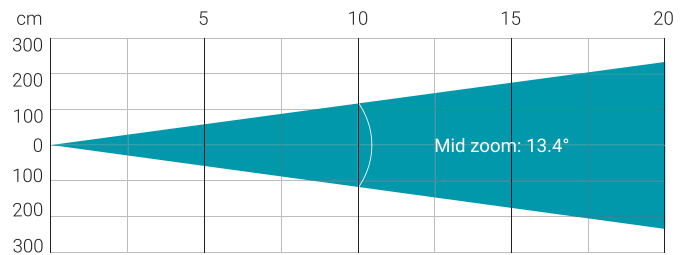
1 to 25 fl./sec.

Photometry



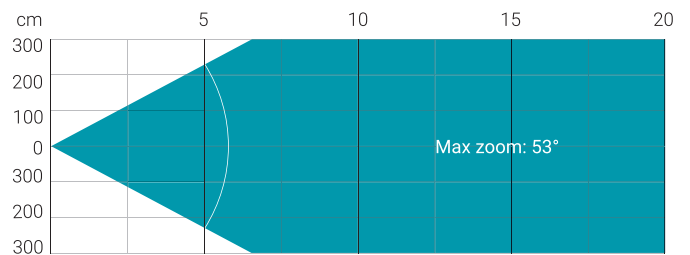
Distance (m)	5		10		15		20	
Unit	lux	Ø	lux	Ø	lux	Ø	lux	Ø
White	191,560	0.31	47,890	0.61	21,284	0.92	11,973	1.22

Note : measurement done with goniometer



Distance (m)	5		10		15		20	
Unit	lux	Ø	lux	Ø	lux	Ø	lux	Ø
White	34,338	1.17	8,584	2.35	3,815	3.52	2,146	4.7

Note : measurement done with goniometer



Distance (m)	5		10		15		20	
Unit	lux	Ø	lux	Ø	lux	Ø	lux	Ø
White	4,456	4.99	1,114	9.97	495	14.96	278	19.94

Note : measurement done with goniometer

Total Flux	51,100 lm Zoom at 49% (Integrating sphere)
------------	--

CCT LED Source	8200 (±500 K)
CCT Luminaire	6700 (±500 K)
Ra Luminaire	70 (±2)
TLCI	48
TM-30	Rf: 71.8 Rg: 92.4

Fan Mode	Noise Level (dBA)	Flux (lm)
Auto Mode	46.2	50,400
Silence Mode	38.9	34,900
Super Silence Mode	35.8	26,100
Stage Mode	58.2	51,100

Note: noise measured at 1m distance, static status, ambient 31dBA

OPTICS

- 13-element 15:1 zoom high-resolution optic system
- Beam aperture: 3.5° to 53°
- Fast motorised linear zoom
- Tempered anti-reflective coated lenses
- 225 mm frontal lens for greater performance

LIGHT SOURCE

- 75,000 lumens 8200 K white light engine
- Total luminaire output: up to 51,100 lumens (integrating sphere measurement, Fan mode AUTO)
- Colour temperature output: 6700 K
- CRI: greater than 70
- Rated life (L70): up to 40,000 hours
- Flicker-free source management suitable for TV applications and all video-recorded events

MOVEMENT

- Extremely accurate positioning
- Moving-head operated via either 8- or 16-bit resolution
- High-resolution stepper motors operated via microprocessors to ensure extreme accuracy and smooth movement
- Pan and tilt automatic repositioning
- Moving-head range: 540° (pan), 270° (tilt)

COLOURS

- Complex colour mixing system with a double CMY saturation level capable of generating billions colours (patent pending)
- Variable CTB colour temperature correction
- Variable CTO colour temperature correction
- Variable CTP colour temperature correction
- Fixed colour wheel with six complementary colours

GOBOS

- Two indexable rotating gobo wheels with seven high precision glass gobos, plus open position
- Adjustable-speed rotating gobo in both directions
- Gobo diameter: 30.0 mm
- Image diameter: 25.0 mm
- Gobo thickness: 1.1 mm

FRAMING SYSTEM

- 4 individually positionable shutter blades on a 100% surface area in all positions
- Rotation of the framing system module: +/- 60°

IRIS DIAPHRAGM

- Fast iris diaphragm with adjustable dynamic effects
- Iris range: 15% to 100% open

FROST

- 2 frost filters: one light, one heavy

EFFECTS

- Monochromatic multi-position graphical animation effects wheel with continuous rotation in both directions
- CMY & RGB colour graphic animation effect-wheel with continuous rotation in both directions
- 2 combinable rotating and indexable prisms: one 5-facet circular, one 4-facet linear

DIMMER / STROBE

- Electronic dimmer, allowing perfect light adjustment from 0 to 100% without colour variation
- Strobe effect, with speed adjustment from 1 to 25 flashes per second

SOFTWARE FEATURES

- Local DMX addressing of luminaire and optional parameters through its built-in LCD control panel
- Remote DMX addressing of luminaire and optional parameters through a standard RDM DMX controller
- Information menu including hour counter, temperature, software version

HARDWARE FEATURES

- Graphic LCD display for addressing and special functions settings, with flip function
- Clicking jog wheel to set functions
- Excess temperature protection
- Integrated wireless CRMX TiMo RDM receiver from LumenRadio
- XLR 5 pin male and female connectors for DMX connection
- Ethercon RJ45 IN / OUT connectors for ArtNet connection
- PowerCON TRUE1 male connector for power connection

CONTROL

- DMX 512 protocol, through DMX cable or a wireless system
- DMX-RDM compatible
- Stand-alone mode and Master/Slave modes
- ArtNet & sACN protocol through Ethernet cable
- Local control panel, with LCD display
- Choice of 3 DMX modes (from 44 to 70 DMX channels)

POWER SUPPLY

- Electronic supply with active PFC
- 120 to 240 Volts – 50/60Hz
- Power: 1,470 W maximum

COOLING SYSTEM

- Advanced liquid cooling system
- Self-adjusting variable speed fans for quiet operation (Auto mode)
- Selectable ventilation user modes including Super Silent Mode
- Safety protection against excess temperature

HOUSING

- Moving-head skeleton made of aluminium and steel metal plates
- Base in die-cast aluminium
- Heatsinks in aluminium and copper
- Moulded covers in self-extinguishing fire retardant ABS PC (V0 class)
- Two-side handles for transportation
- Four heavy-duty feet for better stability
- IP20 protection rating
- Exterior finish: black (Carbon)

INSTALLATION

- Fastening bracket system: two Omega ¼ turn brackets designed for use with standard clamps
- Mounting points: eight ¼ turn locking fittings allowing installation of Omega brackets on luminaire
- Safety cable attachment point

OPERATING PARAMETERS

- Operating positions: all (device on floor or fixed to a support)
- Maximum permitted ambient temperature (Ta max): 45° C (113° F)
- Minimum permitted ambient temperature (Ta min): -10° C (14° F)
- Minimum usage distance: 3.0 m (9.84 ft.)

COMPLIANCE

EU (EMC & LVD):

- EMC Directive 2014/30/EU
- LVD Directive 2014/35/EU

US (Safety & EMC)

- UL 1573
- FCC Part 15, Subpart B:2018

SIZE

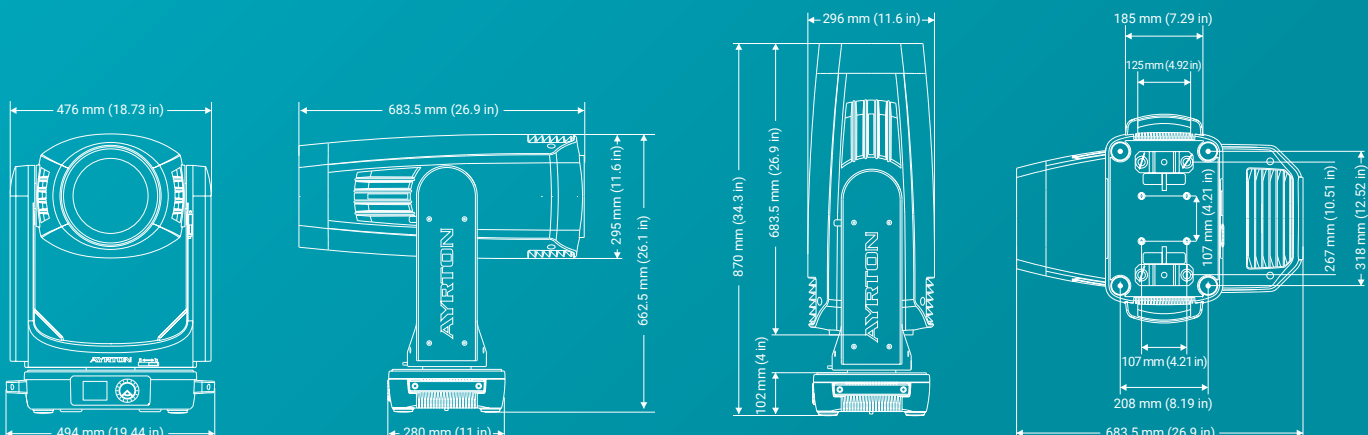
- Product: 494 x 867 x 280 mm (l x h x d)
- Flight-case foam: 745 x 550 x 660 mm (l x h x d)

WEIGHT

- Product: 53.8 kg

PRODUCT CODES

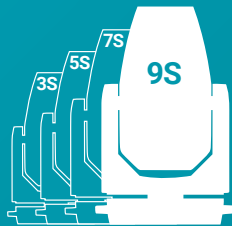
- 011870: HURACÁN LT - CLASSICAL 9 SERIES





AYRTON

Digital Lighting



www.ayrton.eu

10.2021